

**DETERMINATION OF ELIGIBILITY AND  
EFFECT FOR THE 6382 PHILLIP ROAD PROJECT,  
CITY OF ROSEVILLE, CALIFORNIA**

Prepared by

**Peak & Associates, Inc.**  
3941 Park Drive, Suite 20-329  
El Dorado Hills, CA 95762  
(916) 939-2405

Prepared for

**Panattoni Development Company**  
8775 Folsom Boulevard, Suite 200  
Sacramento, CA 95826  
(916) 340-0573

September 24, 2025  
(Job #22-041)

## INTRODUCTION

"PDC Sacramento LPIV, LLC (PDC) proposes a comprehensive mixed-use development on a 249.54-acre area at 6382 Phillip Road in Roseville, California. The southern portion of the project site will support an innovation center on the western half and a mix of single-family and multi-family residential uses on the eastern half. The northern parcel is planned for residential development.

A critical element of the development is the need for infrastructure connectivity between the northern and southern parcels. To enable this, the project includes the construction of a new 344-foot-long, 59-foot-wide bridge over Pleasant Grove Creek and its bypass channel. The bridge will support two vehicle travel lanes, 10-foot-wide sidewalks on the east side, ensuring multimodal accessibility and safety.

Integral to the project is the installation of essential utility infrastructure across Pleasant Grove Creek. An 8-inch sanitary sewer line will be installed within a 10-foot-deep trench that crosses both Pleasant Grove Creek and its bypass channel, constructed beneath the creek bed to link the northern and southern development areas. A potable water line and a reclaimed water line will also be installed and affixed to the underside of the bridge deck using utility hangers. These pipelines will be sleeved and insulated to ensure long-term durability and freeze protection. To manage stormwater runoff from the southern development area, three storm drain outlets will be constructed along the southern bank of the Pleasant Grove Bypass Channel, with an additional outlet installed on the north side. These outlets will discharge into the natural floodplain through energy dissipation structures designed to reduce erosion and protect adjacent habitat.

Additionally, the project includes the construction of two Class I bicycle trails as part of the city's trail network. The primary trail segment will be a 10-foot-wide paved path running along the south side of Pleasant Grove Bypass channel, connecting the Creekview subdivision to the east with the future Placer Parkway to the west. This southern trail will pass beneath the new bridge, ensuring uninterrupted east-west connectivity. A second, shorter trail segment on the north side of the creek at the northeast edge of the property will provide a scenic route with views of the riparian corridor and connect to nearby residential areas. Both trail segments will include ADA-compliant slopes and wayfinding signage and will be landscaped with native vegetation to enhance ecological value and user experience.

To support long-term utility service, the project boundary includes a 70-foot-wide public utility easement (PUE) spanning two adjacent parcels (APNs: 496-020-001-000 and 496-020-035-000) along the southern boundary and extending across the eastern portion of the project site (APN: 017-101-008). This corridor will accommodate a new 60 kV overhead electrical line and associated equipment, as requested by the City of Roseville, ensuring reliable power delivery and capacity for future development.

The project addresses regional housing and infrastructure needs, improves circulation and connectivity within a rapidly growing area, and advances economic development goals set forth by the City of Roseville's long-range planning documents."

western

the 70' PUE goes to the northern edge of the electric substation parcel then it reduces to 25' PUE to the north.

### Project Location

The location of the project is on a 249.54-acre parcel (APN 017-101-008) at 6382 Philips Road in Roseville, Placer County, California 95747 (Figure 1). It lies within the Upper-Coon/Upper-Auburn watershed (HUC 18020161) at approximately 73 to 88 feet above mean sea level (msl) and centered at 38°48'9.63"N latitude and 121°23'48.74"W longitude.

The parcel was originally planted during the 1950s, and was maintained in rice production through the 1990s, and has been planted with irrigated crops until the present day. Continuous cultivation over the past 70+ years has modified the site's original hydrology (via leveling and rice checks) to effectively remove any native vernal pool wetlands that occurred here historically and that still persist in much of the surrounding landscape.

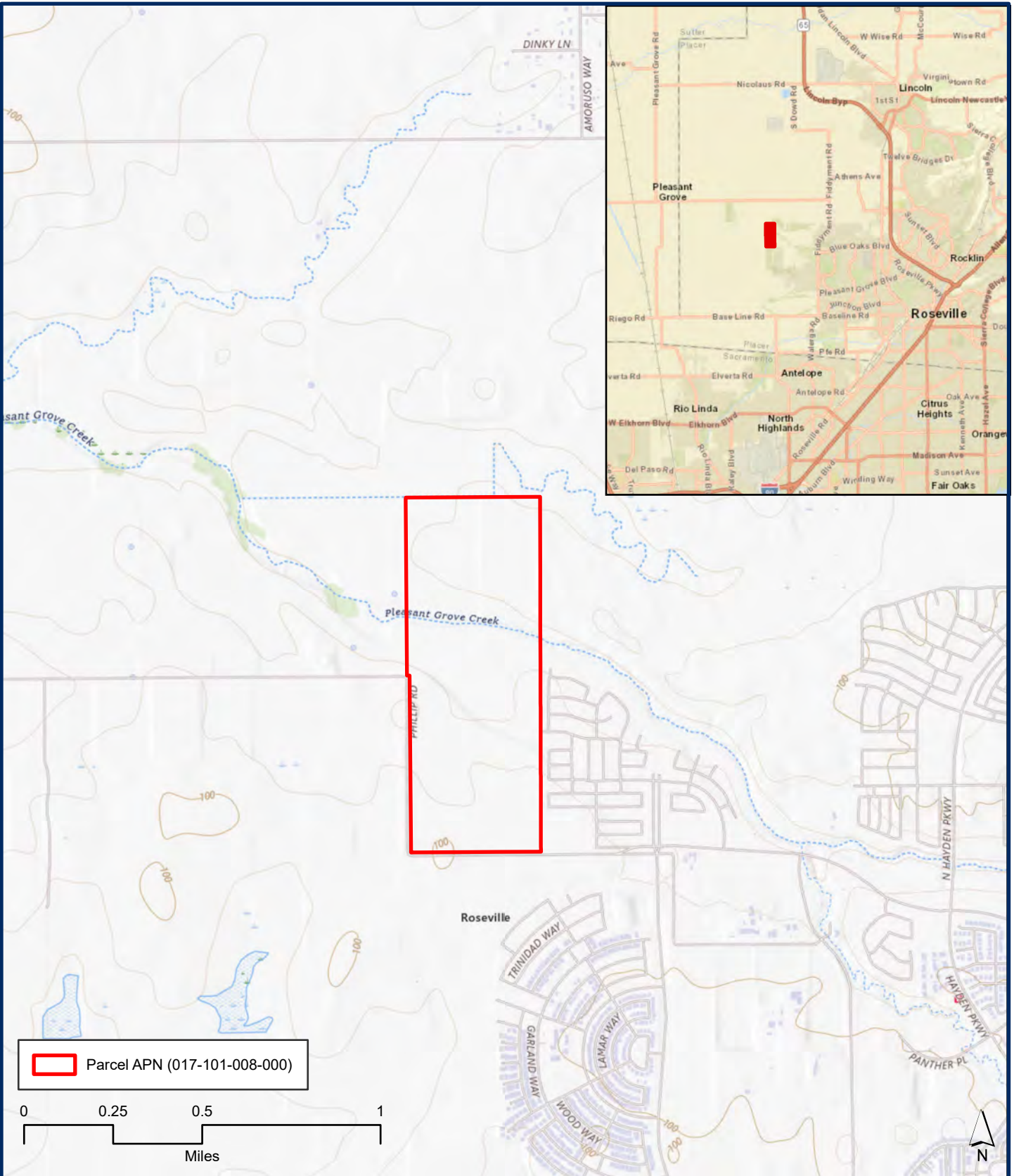
The Pleasant Grove Creek watershed is located in western Placer County, including the western portions of the Cities of Roseville and Rocklin. This creek empties into the Pleasant Grove Creek Canal which drains to the Sacramento River via the Cross Canal.

With multiple impacts planned for Pleasant Grove Creek that bisects the Project area, we consider the entire Project area to be the Area of Potential Effect (APE). The APE is within Sections 14 and 15, Township 11 North, Range 5 East of the California 7.5-minute United States Geological Survey (USGS) Pleasant Grove quadrangle (Figures 1 and 2).

## **Cultural Resources**

The proposed project will involve Section 404 of the Clean Water Act with the US Army Corps of Engineers (USACE). The applicant will participate as a consulting party to assist the federal agency in demonstrating compliance with Section 106 of the NHPA (16 U.S.C. 470f; regulations codified at 36 CFR Section 800).

The current project involved collection of background data, including a record search through the North Central Information Center of the California Historical Resources Information System, Native American consultation, and a complete pedestrian survey of the Project area, all previously conducted by Emilie Zelazo of Ascent Environmental in May 2022 for California Environmental Quality Act (CEQA) review. Melinda Peak served as principal investigator for the current study, preparing the report, with Michael Lawson completing the fieldwork (resumes, Appendix 1).



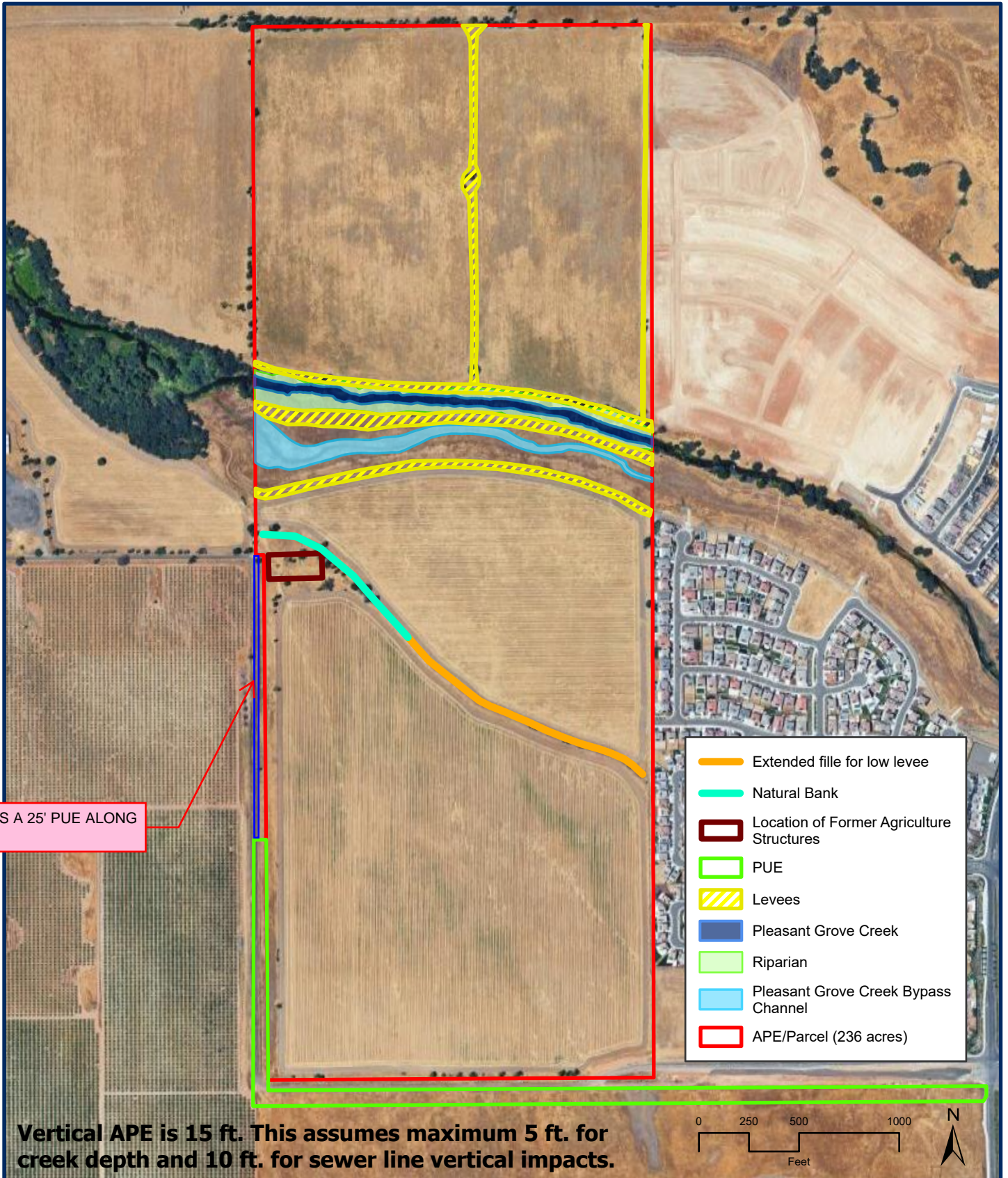
Source: USGS 7.5-Minute Topographic Quad Pleasant Grove, Placer County, CA

## FIGURE 1 - VICINITY

Date: September 20, 2025

6382 PHILLIP RD • PLACER COUNTY, CA





**Vertical APE is 15 ft. This assumes maximum 5 ft. for creek depth and 10 ft. for sewer line vertical impacts.**

## EXHIBIT 1 - APE

Date: September 20, 2025



6382 PHILLIP RD • PLACER COUNTY, CA

## REGULATORY CONTEXT

The Section 106 review process is implemented using a five step procedure: 1) identification and evaluation of historic properties; 2) assessment of the effects of the undertaking on properties that are eligible for the National Register; 3) consultation with the State Historic Preservation Office (SHPO) and other agencies for the development of a memorandum of agreement (MOA) that addresses the treatment of historic properties; 4) receipt of Advisory Council on Historic Preservation comments on the MOA or results of consultation; and 5) the project implementation according to the conditions of the MOA.

The Section 106 compliance process may not consist of all the steps above, depending on the situation. For example, if identification and evaluation result in the documented conclusion that no properties included in or eligible for inclusion are present, the process ends with the identification and evaluation step.

## FRAMEWORK FOR EVALUATION

Decisions regarding management of cultural resources hinge on determinations of their significance (36 CFR 60.2). As part of this decision-making process the National Park Service has identified components which must be considered in the evaluation process, including:

- o criteria for significance;
- o historic context; and
- o integrity.

### Criteria for Significance

Significance of cultural resources is measured against the National Register criteria for evaluation:

The quality of significance in American history, architecture, archeology, engineering, and culture is present in districts, sites, buildings, structures, and objects that possess integrity of location, design, setting, materials, workmanship, feeling, and association, and,

- (a) that are associated with events that have made a significant contribution to the broad patterns of our history; or
- (b) that are associated with the lives of persons significant in our past; or
- (c) that embody the distinctive characteristics of a type, period, or method of construction, or that represent the work of a master, or that possess high artistic values, or that represent a significant and distinguishable entity whose components may lack individual distinction; or
- (d) that have yielded, or may be likely to yield, information important in prehistory or history (36 CFR 60.4).

### Historic Context

The historic context is a narrative statement “that groups information about a series of historic properties based on a shared theme, specific time period, and geographical area.” To evaluate resources in accordance with federal guidelines, these sites must be examined to determine whether

they are examples of a defined “property type.” The property type is a “grouping of individual properties based on shared physical or associative characteristics.” Through this evaluation, each site is viewed as a representative of a class of similar properties rather than as a unique phenomenon. A well-developed historical context helps determine the association between property types and broad patterns of American history. Once this linkage is established, each resource's potential to address specific research issues can be explicated.

## **Integrity**

For a property to be eligible for listing in the National Register it must meet one of the criteria for significance (36 CFR 60.4 [a, b, c, or d]) and retain integrity. Integrity is defined as “the authenticity of a property's historic identity, evidenced by the survival of physical characteristics that existed during the property's historic or prehistoric period.”

The following discussion is derived from National Register Bulletin 15 (“How to Apply the National Register Criteria for Evaluation”).

Within the concept of integrity, there are seven aspects or qualities that define integrity in various combinations. The seven aspects are: location, design, setting, materials, workmanship, feeling, and association. To retain historic integrity, a property will possess several or usually most of these aspects. The retention of specific aspects is necessary for a property to convey this significance. Determining which of the seven aspects are important involves knowing why, where and when the property is significant.

The prescribed steps in assessing integrity are as follows:

- define the essential physical features that must be present for a property to represent its significance;
- determine whether the essential physical features are visible enough to convey their significance;
- determine whether the property needs to be compared with similar properties; and,
- determine, based on the significance and essential physical features, which aspects of integrity are particularly vital to the property being nominated and if they are present.

Ultimately, the question of integrity is answered by whether the property retains the identity for which it is significant. All properties change over time. It is not necessary for a property to retain all its historic physical features or characteristics. However, the property must retain the essential physical features that enable it to convey its historic identity. The essential physical features are those features that define why a property is significant.

A property’s historic significance depends on certain aspects of integrity. Determining which of the aspects is most important to a particular property requires an understanding of the property's significance and its essential physical features. For example, a property’s historic significance can be related to its association with an important event, historical pattern or person. A property that is significant for its historic association is eligible for listing if it retains the essential physical features that made up its character or appearance during the period of its association with the important event, historical pattern, or person.

A property important for association with an event, historical pattern, or person ideally might retain some features of all seven aspects of integrity. Integrity of design and workmanship, however, might not be as important to the significance, and would not be relevant if the property were an archeological site. A basic integrity test for a property associated with an important event or person is whether a historical contemporary would recognize the property as it exists today. For archeological sites that are eligible under criteria A and B, the seven aspects of integrity can be applied in much the same way as they are to buildings, structures, or objects.

In sum, the assessment of a resource's National Register eligibility hinges on meeting two conditions:

- o the site must possess the potential to be eligible for listing in the National Register under one of the evaluation criteria either individually or as a contributing element of a district based on the historic context that is established; and
- o the site must possess sufficient integrity, and retains the qualities that make it eligible for the National Register.

For the National Register, "a district possesses a significant concentration, linkage, or continuity of "... objects united historically or aesthetically by plan or physical development." The identity of a district derives from the relationship of its resources, which can be an arrangement of functionally related properties.

## **STATE REGULATIONS**

State historic preservation regulations affecting this project include the statutes and guidelines contained in the California Environmental Quality Act (CEQA; Public Resources Code sections 21083.2 and 21084.1 and sections 15064.5 and 15126.4 (b) of the CEQA Guidelines). CEQA Section 15064.5 requires that lead agencies determine whether projects may have a significant effect on archaeological and historical resources. Public Resources Code Section 21098.1 further cites: A project that may cause a substantial adverse change in the significance of an historical resource is a project that may have a significant effect on the environment.

An "historical resource" includes, but is not limited to, any object, building, structure, site, area, place, record or manuscript that is historically or archaeologically significant (Public Resources Code section 5020.1). Advice on procedures to identify such resources, evaluate their importance, and estimate potential effects is given in several agency publications such as the series produced by the Governor's Office of Planning and Research (OPR), CEQA and Archaeological Resources, 1994. This document is no longer available on line, and no comparable replacement has been issued by that agency. In summary, California law protects Native American burials, skeletal remains, and associated grave goods regardless of the antiquity and provides for the sensitive treatment and disposition of those remains (California Health and Safety Code Section 7050.5, California Public Resources Codes Sections 5097.94 et al).

## **The California Register of Historical Resources (Public Resources Code Section 5020 et seq.)**

The State Historic Preservation Office (SHPO) maintains the California Register of Historical Resources (CRHR). Properties listed, or formally designated as eligible for listing, on the National Register of Historic Places are automatically listed on the CRHR, as are State Landmarks and Points of Interest. The CRHR also includes properties designated under local ordinances or identified through local historical resource surveys.

For the purposes of CEQA, an historical resource is a resource listed in, or determined eligible for listing in the California Register of Historical Resources. When a project will impact a site, it needs to be determined whether the site is an historical resource. The criteria are set forth in Section 15064.5(a) (3) of the CEQA Guidelines, and are defined as any resource that does any of the following:

- A. Is associated with events that have made a significant contribution to the broad patterns of California's history and cultural heritage;
- B. Is associated with the lives of persons important in our past;
- C. Embodies the distinctive characteristics of a type, period, region, or method of construction, or represents the work of an important creative individual, or possesses high artistic values; or
- D. Has yielded, or may be likely to yield, information important in prehistory or history.

In addition, the CEQA Guidelines, Section 15064.5(a) (4) states:

The fact that a resource is not listed in, or determined to be eligible for listing in the California Register of Historical Resources, not included in a local register of historical resources (pursuant to section 5020.1(k) of the Public Resources Code), or identified in an historical resources survey (meeting the criteria in section 5024.1(g) of the Public Resources Code) does not preclude a lead agency from determining that the resource may be an historical resource as defined in Public Resources Code section 5020.1(j) or 5024.1.

## **California Health and Safety Code Sections 7050.5, 7051, and 7054**

These sections collectively address the illegality of interference with human burial remains, as well as the disposition of Native American burials in archaeological sites. The law protects such remains from disturbance, vandalism, or inadvertent destruction, and establishes procedures to be implemented if Native American skeletal remains are discovered during construction of a project, including the treatment of remains prior to, during, and after evaluation, and reburial procedures.

## **California Public Resources Code Section 15064.5(e)**

This law addresses the disposition of Native American burials in archaeological sites and protects such remains from disturbance, vandalism, or inadvertent destruction. The section establishes procedures to be implemented if Native American skeletal remains are discovered during

construction of a project and establishes the Native American Heritage Commission as the entity responsible to resolve disputes regarding the disposition of such remains.

## **Assembly Bill 52**

Assembly Bill (AB) 52 establishes a formal consultation process for California tribes as part of CEQA and equates significant impacts on tribal cultural resources with significant environmental impacts. AB 52 defines a “California Native American Tribe” as a Native American tribe located in California that is on the contact list maintained by the Native American Heritage Commission. AB 52 requires formal consultation with California Native American Tribes prior to determining the level of environmental document if a tribe has requested to be informed by the lead agency of proposed projects.

AB 52 also requires that consultation address project alternatives, mitigation measures, for significant effects, if requested by the California Native American Tribe, and that consultation be considered concluded when either the parties agree to measures to mitigate or avoid a significant effect, or the agency concludes that mutual agreement cannot be reached. Under AB 52, such measures shall be recommended for inclusion in the environmental document and adopted mitigation monitoring program if determined to avoid or lessen a significant impact on a tribal cultural resource.

## **CULTURAL SETTING**

### **Prehistory**

Until recent years, few archeological studies have been conducted in this region. Early excavations had focused either on the large, rich village sites in the Delta region and along the major waterways in the Central Valley or on the higher elevation sites in proposed reservoir areas, along major Sierra Nevada waterways. As a result, chronological sequences have been established for each region, with later work emphasizing refinement of these sequences.

Increasing urbanization in the Sacramento region over the past thirty years has pushed development further from the major drainages and into the margin of the Sacramento Valley and the Sierra Nevada foothills. There is no established archeological sequence for the region, but the ties seem to be stronger to the Sierra Nevada.

The project is located in an interesting area for archeological research because it is between three areas with defined archeological sequences: the Oroville locality to the north, the Central Sierra area to the east and the Central Valley/Delta area to the west. These sequences include many similar artifact types and dates for major cultural changes, but there are also significant differences between them. It is an important goal of archeology to determine how these differences relate to different cultural traditions, cultural adaptation to differing environmental conditions or other natural or cultural influences. It is not clear at present which of these sequences best reflects the prehistory of the project vicinity or if a separate local sequence is necessary to adequately describe the area.

An excavation project by Chavez (1982) on sites on Linda Creek and Strap Ravine corroborated the findings of earlier work that indicated that the strong Central Valley association characteristic of the late prehistoric cultures in the foothill area might not extend to earlier cultures. Although there are many similarities with the material culture of the Late Horizon of the Central Valley, there are also significant points of diversion.

In the Linda Creek area, only site CA-PLA-210 produced artifacts from excavation units. There was evidence of two components at the site, although they were not distinctly separated by stratigraphy. The more recent component, characterized by Desert Side Notched points and emphasis on the use of chert and other silicates, probably dates to Phase II of the Late Horizon -- about A.D. 1500 to the time of European contact. The older component is represented by one Gunther Barbed projectile point and an emphasis on basalt as well as silicates. This component probably dates to Phase I of the Late Horizon, about A.D. 500 to 1500. Chavez (1982:58) cautions that these conclusions are tentative due to the small number of units excavated and the low recovery rate of artifacts within these units.

The Strap Ravine sites appear to have been occupied earlier than the Linda Creek sites, and, although times of occupation overlapped, they were probably abandoned earlier as well. The excavations at CA-PLA-38 recovered enough obsidian flakes to permit sourcing by X-ray fluorescence and dating by obsidian hydration. This dating technique indicated occupation of the site from about 500 B.C. to A.D. 500. Chavez, on the basis of projectile point types recovered from the site, suggests that occupation continued later than this, through Phase I and possibly into Phase II (Chavez 1982:51). Again, the conclusions must be considered tentative due to the relatively small artifact collection contributing to the analysis.

Artifacts that suggest occupation earlier than A.D. 500--into the transitional period between the Middle and Late Horizons--include a Type C3 *Olivella* shell bead and two slate projectile points bearing distinct morphological similarities to Martis Complex styles. The slate points, both recovered from CA-PLA-87, resemble a Type 4c point as defined at CA-NEV-15 (Elsasser 1960) and a Martis Contracting Stem (Elston et al. 1977) according to Chavez (1982:47). Point types suggesting Phase I occupation were also recovered from Strap Ravine sites.

Chavez (1982), dealing with a limited artifact collection, did not go so far as to suggest occupation of the area by a population bearing the Martis Culture. He noted the position of the project vicinity between three areas of differing cultural sequences (as mentioned above) and suggested that the wide variety of artifact types indicated that the area "...could have served as a culture contact and exchange 'hub'..." (Chavez 1982:52). A test excavation performed by Peak & Associates (1988) on a very small midden site, CA-PLA-176, on the Linda Creek watershed, also recovered a slate point similar in style to those associated with the Martis Culture.

The presence of Martis-like (Middle Archaic) artifacts was also noted at site CA-PLA-633 (Locus C) and CA-PLA-636 (Davy 1989) located in the Stanford Oaks project area. Of the 27 projectile points recovered during the excavation of the sites within the Stanford Oaks project area, six (22 percent) weighed more than two grams, and "...may or may not have been atlatl...dart points" (Davy 1989:163). The excavation of CA-PLA-663/H has also resulted in the discovery of larger projectile points that may date to this period as well.

The extensive excavations in the Twelve Bridges Golf Club project area provide a large body of data

toward defining the characteristics of the cultures in this area and a better idea of the cultural succession. The survey of Bickford Ranch in 1995 included a large volcanic plateau that was almost devoid of prehistoric resources, but the margins of the plateau were the scene of considerable prehistoric occupation and use. Almost all sites in these project areas were associated with bedrock mortars.

The most recent prehistoric cultures of the area reflect, in general, the late cultures of the Central Valley, though there are interesting local variations. Some of the differences clearly result from the greater wealth and population in the valley, but other differences may reflect a technological response to differing ecological settings and resource exploitation techniques.

In the preceding phase of prehistory there is a consistent expression of high Sierra Nevada and Great Basin relationships of some sort. However, the projectile points that reflect this connection are often produced on material imported from the Coast Ranges, although manufacture on locally available non-obsidian materials is much more common. The reasons for this situation are not clear. This could also be a response to differing ecological settings, but the relationship between foothill sites and the Martis Culture proper is an open question.

## **Ethnology**

At the time of the gold rush, the project vicinity was occupied by the Nisenan Indians, identified by the language they spoke. There have been several general treatments of the Nisenan culture by Kroeber 1929, 1953; Littlejohn 1928; Beals 1933; Wilson and Towne 1978 and Wilson 1982. There are also several more specific articles on various aspects of their culture as reported in the bibliography and elsewhere.

The Nisenan peoples occupied the drainages of the Yuba, Bear, and the American Rivers from the Sacramento River on the west to the summit of the Sierra in the east. The Foothill and Hill Nisenan peoples were distinctive from the Valley Nisenan and were loosely organized into tribelets or districts with large central villages, surrounded by smaller villages. These are often referred to as winter villages by older Indians. These central villages and their leaders seemed to have had power or control over the surrounding smaller villages and camps and specific surrounding territory (Beals 1933; Littlejohn 1928; Wilson and Towne 1978). These districts were oriented to the natural resources and the landforms.

In the foothills and mountains, the major drainages became formal or informal boundaries with the land in between forming the district. Thus, the Placerville District is between the Cosumnes River and the Middle Fork of the American River, the Auburn District between the Middle Fork of the American River and the Bear River and the Nevada City District between the Bear River and the Yuba River.

All the Nisenan depended on activities attuned to the seasonal ripening of plant foods and the seasonal movements and migration of the animals and the runs of fish. With the flooding of the valley in the winter and spring a great number of animals such as elk, antelope and bears moved to the natural levees along the rivers and up into the lower foothills. Along the foothill margins they joined the resident and migratory deer herds. Huge flocks of waterfowl visited the flooded areas between the

rivers and the foothills, coveys of quail gathered in the fall, and pigeons were common in the fall and spring. Steelhead and salmon ran up most of the major streams including Secret Ravine and Auburn Ravine in the fall, winter, and spring. The hunting of these plentiful resources was part of the foothill lifeway.

This same bounty was available to the river-oriented valley peoples out on the valley floor and along the natural levees of the rivers. Major north-south Indian trails along the margin of the foothills were usable year around as well as other trails east and west along the natural levees of the stream courses. There was probably not a great deal of competition for resources at this time except in lean years. Both the valley and foothill peoples lived at the edges of rich ecotones: the rivers and the valley floor, and the valley floor and the foothills.

While the Hill Nisenan to the east in the foothills carried on trade with the valley peoples and shared some of the cultural traits, they lacked the complexity or richness of the Valley Nisenan. The Hill Nisenan had a different resource base to work with which required greater mobility and a more intense use of the available resources (Matson 1972). They developed a local culture that was more oriented to the gathering, storage and year-round use of the acorn, continual foraging of resources by everyone in the village group, specialized hunting strategies and availability of different plants to gather and process (Erskian and Ritter 1972). They depended on activities attuned to the seasonal ripening of plant foods and the seasonal migrations and increased populations of animals and insects. The foothill people relied more on foraging for food, for immediate use or short-term storage, rather than gathering for future needs. This meant they had to be much more mobile in their use of the land and its resources. Population densities and the large number of campsites reflect the more limited ability to acquire and utilize the fewer available resources: they had to work harder for less.

This continual movement meant the foothill people did not have large year-round villages. There are no known major villages in the foothills or mountains that can compare with the valley permanent village sites or population densities. However, there are hundreds of small campsites and villages scattered across the foothills and mountains with certain localities as the centers for these hill peoples.

It appears that the hill people were more socially organized around the extended family than to the village and would often camp in informal family groups around the central village. Since they did some foraging as well as extensive fishing and hunting in the winter, they needed to always have some access to a resource base. However, due to the ability to store acorns and other dried foods and take advantage of the winter concentrations of game, birds, and fish, they could congregate in larger villages in the wintertime. There is some evidence that these winter villages were moved at times if the local resources were too badly depleted. Over a long period of time a center village may have been abandoned and moved and then reoccupied later. Many place names refer to these old or unoccupied sites.

At the central villages there was the need to build and maintain more substantial houses for winter living. Larger family houses, a dance house and acorn granaries were part of these winter quarters. The availability of firewood may also have been a factor in the preference for living up in the oak woodlands of the foothills. Winter was the time of ceremonies, social gatherings, and marriages. Shamans had contests, children were trained, and trade items, tools, baskets, and equipment were made and repaired.

## Regional History

After James Marshall's discovery of gold at Coloma on the South Fork of the American River in 1848, thousands came to the Sierra foothills seeking their fortunes. The creeks and drainages throughout the foothill region were worked by the early miners, with varying degrees of success. Many towns grew up to provide goods and services to the miners.

The 1833 malaria epidemic that decimated the native peoples in the Central Valley played a major role in defining the post-Contact land use pattern of the Indians of the region, as well as impacting Euro-American economic development. The introduction of malaria to central California *circa* 1831 occurred because of expeditions of several fur brigades of the Hudson's Bay Company with infected individuals. The introduction of the disease led to the tremendous epidemic of 1833 that decimated the Indian population of the region. An estimated three-quarters of the total native population of the region died from the disease in that year.

Malaria was epidemic in the mining camps of the Sierra foothill region, and remained endemic, with frequent sharp local outbreaks throughout the Central Valley until about 1880. The Third Biennial Report of the State Board of Health published in 1875, referenced an undated article from *The Placer Press* that reported, "Almost everybody living west of Gold Hill is either down with fever, or chills and fever, or more or less affected by the miasmatic poison generated and floating around in that locale" (Gray and Fontaine 1951:27).

The value of the land for agriculture was discovered in the 1850s and 1860s. Many in this area raised cattle, and maintained a summer range in the mountains. As the grasses died when the rainfall stopped in May, the ranchers would drive their herds to the summer ranges. In the fall, when the rains began again, the herds would be driven back to the home ranges.

During the late 1950s and early 1960s, the increased urbanization and expansion of various suburban communities from Sacramento to the east along the Highway 80 corridor, led to growth of the housing market in eastern Sacramento County and southern Placer County. Beginning in the 1980s, the lower cost of living and land have drawn high technology firms and other industries to the region, resulting in the subsequent commercial and residential development and expansion of the communities of Roseville, Rocklin, and Lincoln, virtually closing out the era of the large cattle ranches and orchards.

## RESEARCH

The Ascent team conducted a record search through the North Central Information Center of the California Historical Resources Information System on May 28, 2021 (NCIC file PLA-21-36). There were no previously recorded sites within the project area or the buffer area. Five previous surveys covered parts of the APE.

A follow-up record search was conducted through the North Central Information Center of the California Historical Resources Information System on November 28, 2022. This search is PLA-21-36 (Appendix 2). The search included a check for the APE and a ½-mile radius. No sites are reported within the APE, or within a ½ mile radius.

A previous study had been completed for the APE in 2002 (NCIC #7625, Mark Hale/URS). No sites

were apparently found in the APE. Several other surveys covered small portions of the APE. Other surveys with negative results have been conducted in the project search radius.

Peak and Associates completed a record search in 2022, prior to our field survey work. Search NCIC PLA-22-118 again reported no sites in the APE or within the search 0.25-mile-wide buffer (Appendix 2).

Peak and Associates conducted additional records search on September 25, 2025, to include the 70-foot-wide strip proposed for the installation of an underground high-power line (Appendix 5). The search NCIC PLA-25-73 resulted in no recorded sites in the expanded APE or within the search of 0.25-mile-wide buffer (Appendix 2). There are eight reports on studies within the project and three reports within the buffer area. The PUCE alignment had been covered by previous surveys.

### **NATIVE AMERICAN COORDINATION**

The Native American Heritage Commission (NAHC) was requested to check the Sacred Lands files and provide a list of suitable contacts for further information. A letter indicating negative results for the check was received by Ascent Environmental on June 29, 2021 (Appendix 3).

Letters were sent out on July 1, 2021 to the groups previously identified as appropriate contacts for Placer County projects: Clyde Prout, Chairperson, Colfax-Todds Valley Consolidated Tribe; Pamela Cubbler, Treasurer, Colfax-Todds Valley Consolidated Tribe; Grayson Coney, Cultural Director, Tsi-Akim Maidu; Gene Whitehouse, Chairperson, United Auburn Indian Community; Steve Hutchason, THPO, Wilton Rancheria; Dahlton Brown, Director of Administration, Wilton

Rancheria., and Jesus Tarango, Chairperson, Wilton Rancheria. The letters included a location map for the APE. No information on locations of Sacred Lands was received as a result of the coordination effort. The City of Roseville began a government-to-government consultation.

A copy of the NAHC letters may be found in Appendix 3.

Due to the age of the age of the previous coordination effort, Peak & Associates contracted the Native American Heritage Commission on September 25, 2025, for a check of Sacred Lands files, and to obtain a list of current contacts for the APE. Several new groups have been added or included with more contacts for an unknown reason. Groups to be included are tribes that are traditionally and culturally affiliated to the geographic area. The new list of contacts and conclusion that no new reported Sacred Lands present is included in Appendix 6.

### **HISTORICAL GROUP CONSULTATION**

Ascent Environmental also sent letters to two local historic groups In July 2021 that could have information on the APE: the Roseville Historical Society and the Placer County Historical Society. Neither group responded to the request for information.

## **INITIAL FIELD ASSESSMENT**

Given the age of the previous survey, and agricultural disturbance to the property, the project area was re-surveyed by Emilie Zelazo and Alta Cunningham of Ascent Environmental in July 2021. The survey was a complete survey. Surface visibility was very good, with the landscape highly altered by agricultural activities. The result of the survey was the discovery of an isolated prehistoric period artifact, and a concrete pad from a farm building. The only area omitted from the survey were the steep slopes along the north side of Pleasant Grove Creek. No prehistoric period sites or historic period sites were located within project boundaries by the survey team, only the two isolated resources

### **RIP-ISO-1**

The prehistoric artifact was photographed and recorded as RIP-ISO-1. It does not appear to have use wear on it, a conclusion of 4 archeologists who viewed the photographs. It appears to have been part of a load of cobbles brought in for creation or repair of the many nearby levees. We believe it is not a cultural resource. The archaeologist that found the artifact it did not consider it to be a cultural resource therefore, they did not submit their findings.

### **RIP-ISO-2**

This concrete pad is the remnant of a building that was constructed in the APE between 1942 and 1957, based on mapping by the United States Geological Survey. A large oak tree fell on the building, and it was apparently removed soon thereafter. By the 2000s, all buildings shown in this part of the APE had been removed. This is not a site and does not require evaluation.

## **FIELD ASSESSMENT**

Since the prior two surveys failed to find and record the levees, Peak & Associates determined a re-survey was necessary. A new field survey was conducted in October 2024. The only sites found were the levees.

### **The Levees**

There are several levees on the property ranging from the protective levees on either side of Pleasant Grove Creek to low embankments around rice paddies that change year to year. All are formed by pushing up surrounding soils to form an embankment, although some have additional stabilizing work.

The bulk of the levees on the property are north of the creek. There are levees along the property boundaries north of the creek and a north-south levee that divides the northern area into two unequal pieces, the west larger than the east. These average about 2 feet high. The north bank creek levee is higher and includes the only water control feature noted in the system. This is a welded steel pipe allowing water to drain from the eastern field into the creek.

The south bank levee is similar to the north, but it has been reenforced with a plastic construction

material. An overflow channel from the creek has developed just south of the levee. It starts off the property to the west, so the landowner could not block the flow. Therefore, a new levee was built to control the overflow water. It parallels the main creek channel about 250 feet to the south.

South of the new levee there are few water control structures. A farmhouse and outbuildings used to stand at the northwest corner of the southern area. (RIP ISO-2, recorded by Ascent Environmental, is a foundation that is all that remains of the structures.) The farmhouse was near a dividing line between lower land where Pleasant Grove Creek used to meander and land 2-3 feet higher to the south. The farmhouse, on the upper level, was protected by a levee of sorts consisting of piled concrete waste and natural cobbles. More recently the fields have been graded to form level land and the contact between the two levels has been stabilized by roads running on both the upper and lower margins. Figures 3-8 show the extent of the levee system and changes through the years.

### **APE Land Ownership and Use**

The property at 6382 Phillip Road has a rich history shaped by reclamation, agriculture, and eventual public acquisition. Before formal ownership records began in 1957, the land was likely included in early 20th-century reclamation efforts under the Sacramento River Flood Control Project (SRFCP), authorized by the California Legislature in 1913 following the creation of the Reclamation Board in 1911. Historic maps from 1928 and 1936 show flood control features such as levees or drainage alignments on or near the parcel, confirming its inclusion in this system. Aerial imagery from 1952 further confirms the presence of these levees, suggesting they were constructed in the 1913–1916 period in accordance with SRFCP standards.

On June 4, 1957, the land was owned by Marvin and June Schellhaus. During this time, the land was clearly in use for agriculture, as shown in the 1952 aerial. In 1964, the property was transferred to Albert and Mary Eufrazia and Albert Leonard Eufrazia (also known as Albert Leonard Rodriguez). Aerials from 1961 and 1971 show continued agricultural activity with clearly defined levees that helped manage water across the fields.

On March 2, 1968, the property was deeded to Dan L. Morgan, trustee for Rock & Leng Ranch, who then transferred it to the University of Redlands in August of that year. Although the University's exact land use is not detailed, the 1971 aerial indicates the land remained in active agricultural production.

By the early 1990s, ownership had passed to a group of private individuals, including Gregory Kelley, Carlos and Janice Prater, and Michael Douglas. The 1988 and 1993 aerials show active farming with visible levees supporting field layout and flood control. This phase marks a continuation of agricultural use under individual private ownership.

In 2001, the property was acquired by Reason Farms GP. In October 2004, the property was briefly transferred from 1600 Placer Investors to Reason Farms and then conveyed to the City of Roseville. Aerial imagery from 2017 and 2018 shows the area largely undeveloped but surrounded by encroaching residential growth. The levees, still visible, appear less actively maintained, signaling a shift from agricultural use to conservation or public planning.

Today, the parcel remains under City of Roseville ownership. Its legacy is defined by early 20th-century reclamation infrastructure, mid-century agriculture, and its current role as open space within a rapidly urbanizing region.

### **EXTENDED FIELD ASSESSMENT**

Melinda Peak, Principal Investigator, conducted an additional field survey that included the extended Area of Potential Effect (APE) for the linear sections proposed along Philip Road and Blue Oaks Boulevard (Exhibit 2) on September 6, 2025. Much of the APE is paved, and the layout shows the route switching sides of the roadways. The survey began at the northerly end of Philip Road, where the alignment changes from a north–south to an east–west orientation. Most of the survey effort focused on the east side of the corridor, where sediments were exposed, although these areas have been heavily disturbed by prior road construction. At the southern end, the surveyor turned north to follow the west side of the roadway, observing the open areas while remaining outside fenced private lands. In all cases, the surveyor remained outside the fenced private land on the right sides of the Roadway, ultimately reaching the intersection of Blue Okas Blvd and West Brook Blvd. The only observable rock consisted of a few scattered areas of crushed aggregate.

The vehicle was then repositioned near the intersection of Philip Road and Blue Oaks Boulevard, where the same methodology was applied. The survey covered the north side of Blue Oaks Boulevard, then reversed direction at the eastern end of the APE to examine the south side of the roadway. No prehistoric or historic-period artifacts or deposits were identified during the survey. While it is possible that artifacts may have been obscured by historic activities such as fill placement, road excavation, or concealed beneath thick weed cover, the absence of nearby water sources further suggests that this area is of low sensitivity for prehistoric-period resources.

### **LEEVEE SITE EVALUATION**

In our 2024 re-survey of the APE, Peak & Associates found a number of levees and segments of levees. These were not identified as levees or cultural resources by Ascent Environmental.

This shows an interesting change in recognition of resources by the one agency, the USACE. For many years, the guidance for how to record sites contained a list of “resource type” codes. The guidance has no code for reporting a levee. The levee site record we prepared for the project lists them as “other type.”

Cal Trans guidance for recording resources contains a list of site types one did not need to report for their projects. One site type excluded was “levees.” For some reason, the USACE decided to consider recordation and evaluation of this type of infrastructure as reviewable beginning in 2020. For modern utilitarian features such as these levees, recordation of these features seems to lack any benefit, in this case, the levees are simple structures, keeping excess water in or out of the crops in the fields.

The quality of significance in American history, architecture or archaeology is present in sites, buildings, structures, and objects that are associated with events significant in our past, associated with people significant in our past, or that represent the work of a master or possess high artistic values, or that have yielded or are likely to yield information important in prehistory or history.

The levees vary in length and some follow contours rather than straight lines used for many types of agricultural production. The levees appear to have been moved and enlarged several times in response to changing crops and increased floodwater flows (aerial photography, see Figures 3-80). Some may have been constructed to protect long term crops such as orchards from flooding; other levees may have been used to maintain water for the crops such as rice. Some of the levees may be as early as the 1920s and built as federal flood control projects. The latest ones appear to date to the 1960s, related to rice production (Figures 3-8).

The use of levees for controlling water is common throughout California and many other locations nationwide. The presence of the levees on this property for floodwater management associated with agriculture is in no way distinctive and does not confer importance to the features. Many better examples exist elsewhere in conjunction with the development of California agriculture.

We could not find a positive correlation between landowners with the construction of the levees. Without a single creator identified, there is no association with persons significant in the past.

The levees are simple features, likely constructed on an ad hoc basis, with no formal plan. No additional information valuable for local history can be derived from further study of the levees.

The levees recorded within the project area are not eligible for the National Register of Historic Places or the California Register of Historic Resources.

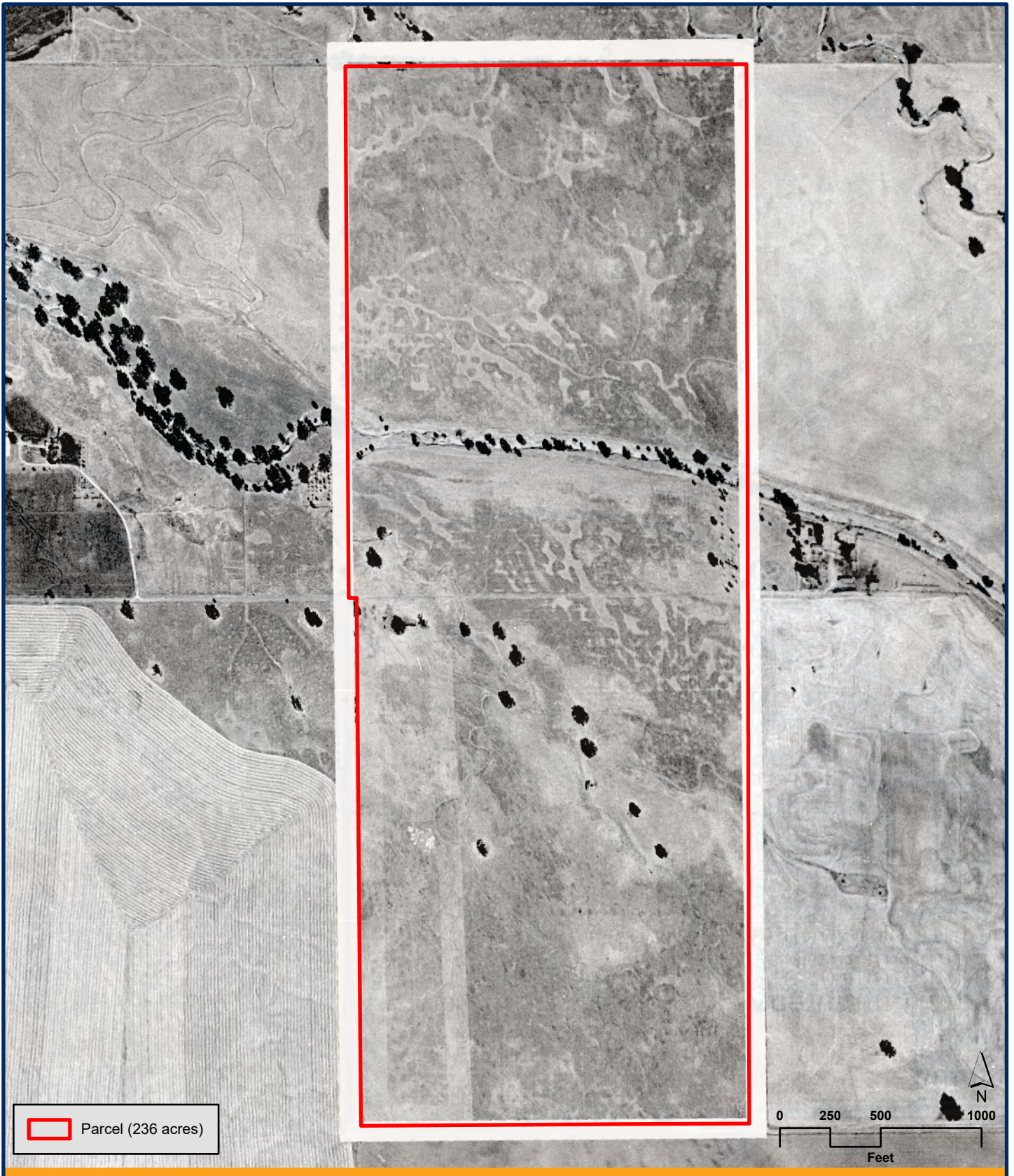


FIGURE 3 - AERIAL 1952

6382 PHILLIP RD • PLACER COUNTY, CA

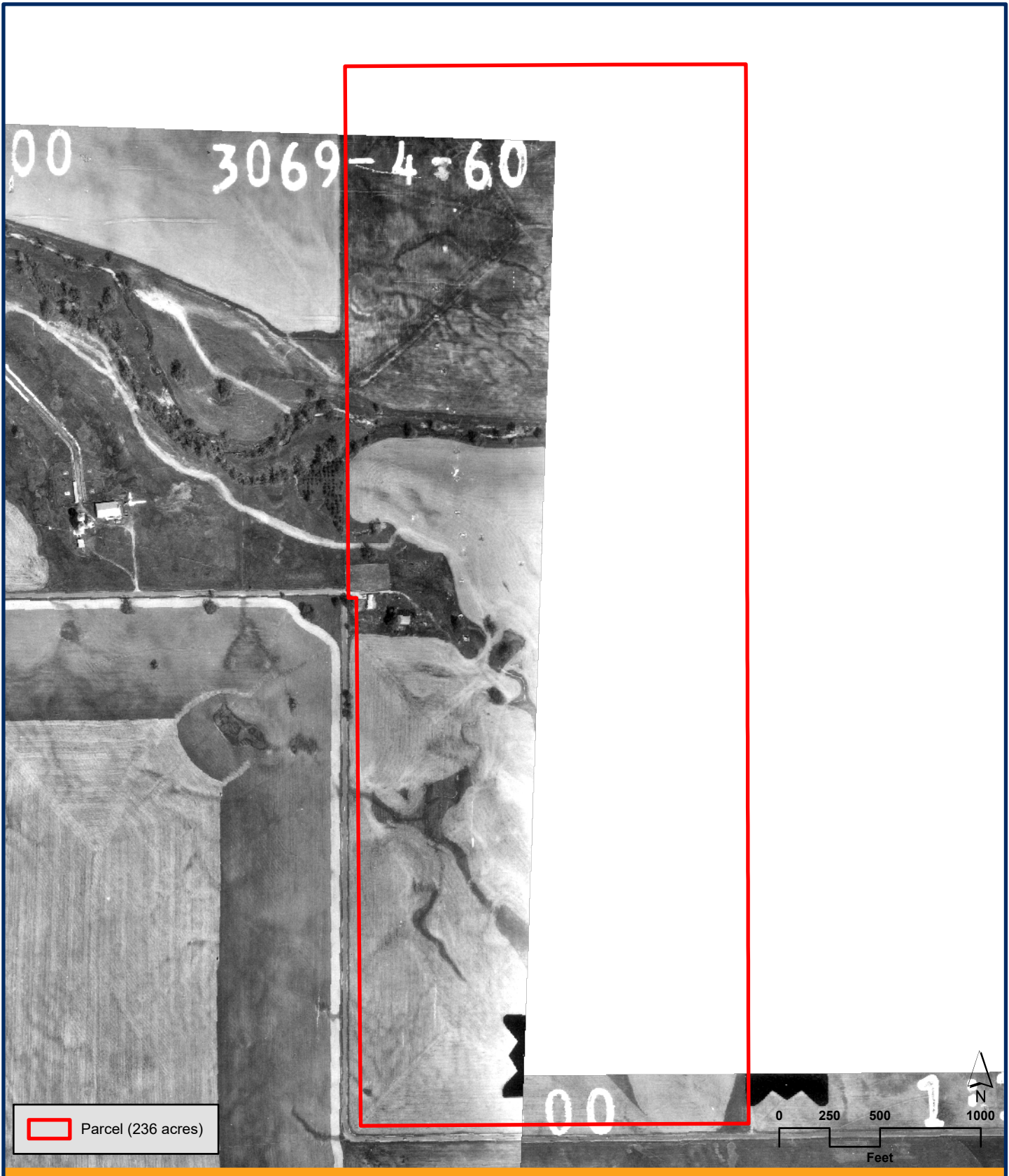


FIGURE 4 - 1971 AERIALS

6382 PHILLIP RD • PLACER COUNTY, CA



FIGURE 5 - 1993 AERIAL

6382 PHILLIP RD • PLACER COUNTY, CA



FIGURE 6 - 2015 AERIAL

6382 PHILLIP RD • PLACER COUNTY, CA



FIGURE 7 - April 2019 AERIAL

6382 PHILLIP RD • PLACER COUNTY, CA

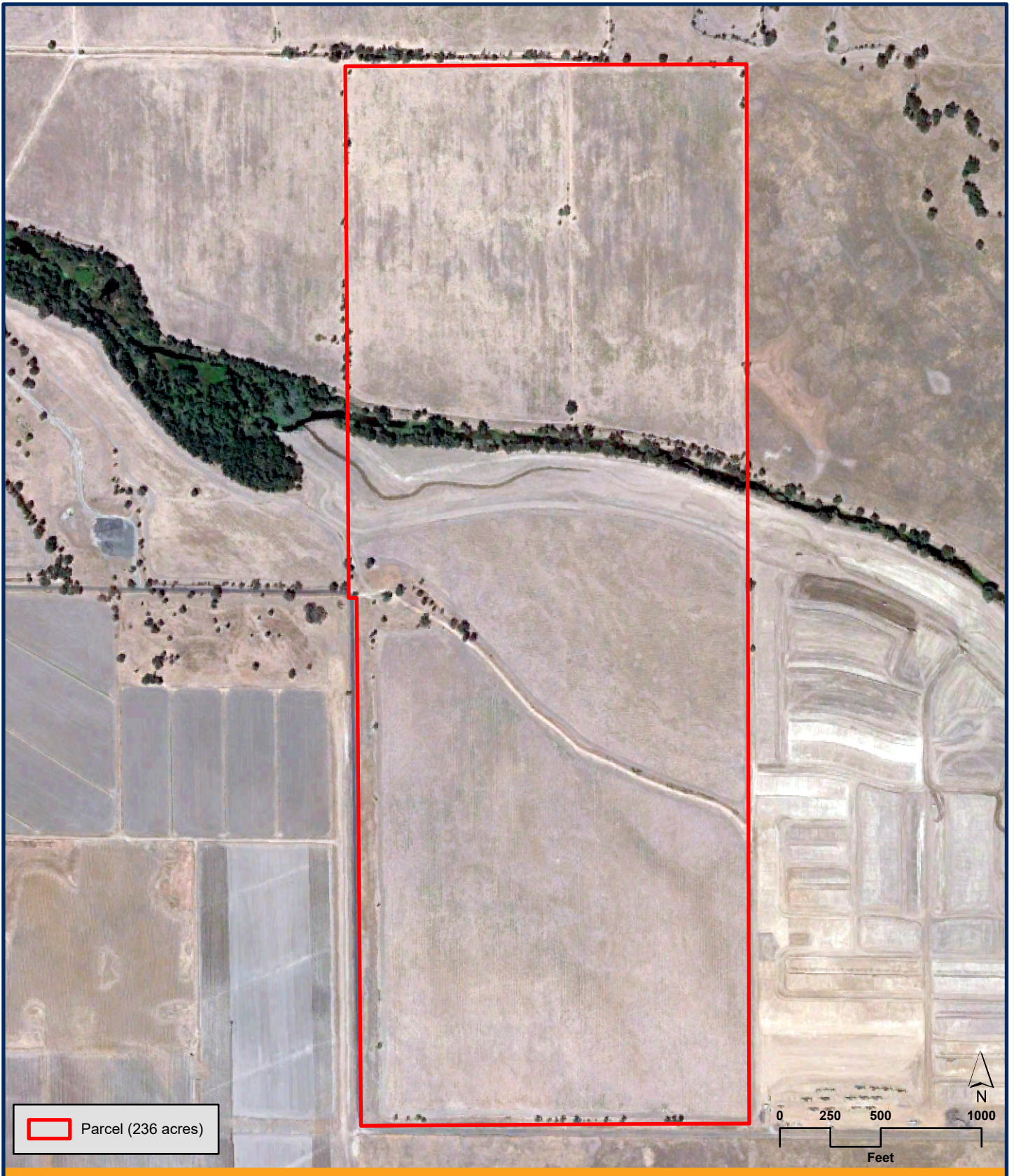


FIGURE 8 - August 2019 AERIAL

6382 PHILLIP RD • PLACER COUNTY, CA

## EFFECTS OF THE PROPOSED PROJECT

As a result of the identification and evaluation efforts, an agency official may find that there are either no historic properties present or there are historic properties present, but the undertaking will have no effect upon them, as defined in Section 800.16 (i).

Another result is that the agency official finds there are historic properties present that may be affected by the undertaking. In that case, the agency official shall apply NHPA criteria to determine whether an adverse effect will occur. "An adverse effect is found when an undertaking may alter, directly or indirectly, any of the characteristics of a historic property that qualify the property for inclusion in the National Register in a manner that would diminish the integrity of the property's location, design, setting, materials, workmanship, feeling or association" (Section 800.5 (a)). There are three possible findings:

- **Finding of no historic properties affected:** There is no effect of any kind on the historic properties.
- **Finding of no adverse effect:** There could be an effect, but the effect would not be harmful to the characteristics that qualify the property for inclusion in the National Register; or
- **Adverse effect:** There could be an effect, and that effect could diminish the integrity of such characteristics.

There are the levees and no other resources present within the APE. With regard to Section 106 of the NHPA, it is recommended that agency seek concurrence from the California SHPO with a finding of "no historic properties affected" per § 800.4(d) (1).

## RECOMMENDATIONS

There is always a possibility that a site may exist in the APE and be obscured by vegetation, siltation, or historic activities, leaving no surface evidence. If artifacts, exotic rock, shell, or bone are uncovered during the construction, work should stop in that area immediately. A qualified archeologist should be contacted to examine and evaluate the deposit.

There seems to be no reason to suspect buried resources. The City of Roseville must have developed policies for dealing with claims of a need for monitoring by local groups; and it is likely that policy will be required for the project. We can make no other recommendation.

### **Discovery of Human Remains**

In the event of discovery or recognition of any human remains in any location other than a dedicated cemetery, there shall be no further excavation or disturbance of the site or any nearby area suspected to overlie adjacent remains until the Placer County Coroner has determined that the remains are not subject to any provisions of law concerning investigation of the circumstances, manner and cause of death, and the recommendations concerning the treatment and disposition of the human remains have been made to the person responsible for the excavation, or to his or her authorized representative. The coroner shall make his or her determination within two working days from the time the person

responsible for the excavation, or his or her authorized representative, notifies the coroner of the discovery or recognition of the human remains.

If the Placer County Coroner determines that the remains are not subject to his or her authority and if the coroner recognizes the human remains to be those of a Native American, or has reason to believe that they are those of a Native American, he or she shall contact, by telephone within 24 hours, the Native American Heritage Commission (NAHC).

After notification, the NAHC will follow the procedures outlined in Public Resources Code Section 5097.98, that include notification of most likely descendants (MLDs), and recommendations for treatment of the remains. The MLDs will have 48 hours after notification by the NAHC to make their recommendations (PRC Section 5097.98).

## REFERENCES

Baumhoff, Martin A.

- 1963 Ecological Determinants of Aboriginal California Populations. *University of California Publications in American Archaeology and Ethnology* 49(2):155-236. Berkeley.

Beardsley, Richard K.

- 1954 Temporal and Areal Relationships in Central California Archeology (parts 1 and 11). *University of California Archaeological Survey Reports* 24, 25. Berkeley.

Beals, Ralph L.

- 1933 Ethnology of the Nisenan. *University of California Publications in American Archaeology and Ethnology* 31(6): 335-413. Berkeley.

Bennyhoff, James A.

- 1977 Ethnogeography of the Plains Miwok. *University of California, Davis Publications* 5.

California Department of Parks and Recreation

- 1990 *California Historical Landmarks*. State Printing Office, Sacramento

Castillo, Edward D.

- 1978 The impact of Euro-American exploration and settlement. In *California*, edited by Robert F. Heizer, pp. 99-127. In *Handbook of North American Indians*. vol. 8, William G. Sturtevant, general editor. Smithsonian Institution, Washington, D.C.

Chavez, David

- 1982 Cultural Resources Evaluation for the Rocklin West Master Environmental Impact Report and the Northwest Rocklin Master Environmental Impact Report, Placer County, California. NCIC Report 003827.

Clark, William B.

- 1970 *Gold Districts of California*. California Division of Mines and Geology Bulletin 193, Sacramento.

Cook, Sherburne F.

- 1955 The Epidemic of 1830-33 in California and Oregon. *University of California Publications in American Archaeology and Ethnology* 43(3):303-326. Berkeley.
- 1960 Colonial Expeditions to the Interior of California: Central Valley 1800-1820. *University of California Anthropological Records* 16(6):239-292. Berkeley.

- 1976 *The Population of the California Indians, 1769-1970*. University of California Press, Berkeley.
- Davis, James T.  
1961 Trade Routes and Economic Exchange Among the Indians of California. *University of California Archaeological Survey Reports* 54:1-71. Berkeley.
- Elston, Robert G., Jonathan O. Davis, Alan Levanthal, and Cameron Covington  
1977 The Archeology of the Tahoe Reach of the Truckee River: A Report to the Tahoe-Truckee Sanitation Agency. Ms. on file, University of Nevada Northern Division of the Nevada Archaeological Survey, Reno.
- Erskian, Malcolm G. and Eric W. Ritter  
1972 Nisenan Ethnobotany Notes. In Papers on Nisenan Environment and Subsistence. Edited by Eric W. Ritter and Peter D. Schulz. *Center for Archaeological Research at Davis, Publication Number* 3:28-31. University of California, Davis.
- Far Western Anthropological Group  
2008 A Geoarchaeological Overview and Assessment of Caltrans District 3. Ms. on file Caltrans.
- Foster, Daniel G.  
1997 An Archaeological Reconnaissance of the Placer Industrial Park and Whitney Business Park, Placer County, California. NCIC Report 003829.
- Foster, Daniel G. and John W. Foster  
1981 An Archeological Reconnaissance of the Roseville – Placer County – Rocklin West Sewer Assessment District. Ms. on file, North Central Information Center, California Historical Resources Information System, California State University, Sacramento.
- Gudde, Erwin G.  
1975 *California Gold Camps*. University of California Press, Berkeley.
- Gray, Harold Farnsworth, and Russel E. Fontaine  
1951 A History of Malaria in California. *Proceedings of the California Mosquito and Vector Control Association* 25:18-39. Sacramento.
- Hale, Mark  
2002 Archeological Reconnaissance of the 1,329 Acre Reason Farms for the City of Roseville, Placer County, California. On file, North Central Information Center.
- Heizer, Robert F., and Albert B. Elsasser  
1953 Some Archaeological Sites and Cultures of the Central Sierra Nevada. *University of*

*California Archaeological Survey Reports* 21:1-42. Berkeley.

1980 *The Natural World of the California Indians*. University of California Press, Berkeley.

Hoover, Mildred, Hero E. Rensch, Ethel G. Rensch and William N. Abeloe

1990 *Historic Spots in California* (Fourth Edition), revised by Douglas E. Kyle. Stanford University Press, Stanford.

Kroeber, Alfred L.

1929 The Valley Nisenan. *University of California Publications in American Archaeology and Ethnology* 24(4):253-290. Berkeley.

1953 *Handbook of the California Indians*. California Book Company, Ltd., Berkeley.

Kyle, Douglas E. (editor)

2002 *Historic Spots in California* (fifth edition), by Mildred Hoover, Hero E. Rensch, and Ethel G. Rensch. Previously edited by William Abeloe. Stanford University Press, Palo Alto.

Levy, Richard S.

1978 Eastern Miwok. In *Handbook of North American Indians* (vol. 8), edited by Robert F. Heizer, pp. 398-413. William G. Sturtevant, general editor. Smithsonian Institution, Washington, D.C.

Littlejohn, H.W.

1928 Nisenan Geography. Ms. on file, Department of Anthropology Archives, Document 18, Bancroft Library, University of California, Berkeley.

Matson, R. G.

1972 Pollen from the Spring Garden Site (4-Pla-101). In *Papers on Nisenan Environment and Subsistence*, edited by Eric Ritter and Peter Schulz, pp. 24-27. *Center for Archaeological Research Davis, Publication 3*, Davis.

McGowan, Joseph A.

1961 *History of the Sacramento Valley*. 3 volumes. New York: Lewis Publishing Company, Inc.

Moratto, Michael J.

1984 *California Archaeology*. Academic Press, New York.

Powers, Stephen

1877 Tribes of California. *Contributions to North American Ethnology* 3. U.S.

Geographical and Geological Survey of the Rocky Mountain Region. Washington.

Rosenthal, Jeffrey S., Gregory G. White and Mark Q. Sutton

2007 The Central Valley: A View from the Catbird's Seat. In: *California Prehistory: Colonization, Culture and Complexity*, pp 147-163. Terry L. Jones and Kathryn A. Klar, editors. Alta Mira Press, New York.

Schenck, W. Egbert and Elmer Dawson

1929 Archaeology of the Northern San Joaquin Valley. *University of California Publications in American Archaeology and Ethnology* 25(4).

Schulz, Peter D.

1981 *Osteoarchaeology and Subsistence Change in Prehistoric Central California*. Unpublished Ph.D. dissertation, Department of Anthropology, University of California, Davis.

Wagner, D.L., C.W. Jennings, T.L. Bedrossain and, E.J. Bortugno

1981 Geologic Map of the Sacramento Quadrangle, California, 1:250,000. Ms. In author's possession.

Wilson, Norman L.

n.d. Miscellaneous Unpublished Field Notes, Maps and Files. Ms., formerly in Norman Wilson's possession, Auburn.

1982 *The Nisenan*. Phantom Press, Sacramento.

Wilson, Norman L. and Arlene Towne

1978 Nisenan. In: *Handbook of North American Indians: California*, Volume 8, edited by Robert F. Heizer. William G. Sturtevant, general editor. Smithsonian Institution, Washington, D. C.

Zelazo, Emilie

2022 Cultural Resources Assessment Report for the Roseville Industrial Park Project. On file, Ascent Environmental, Inc.

## **APPENDIX 1**

### **Resume**

**PEAK & ASSOCIATES, INC.**  
**RESUME**

**MELINDA A. PEAK**  
**Senior Historian/Archeologist**  
3941 Park Drive, Suite 20 #329  
El Dorado Hills, CA 95762  
(916) 939-2405

**January 2025**

**PROFESSIONAL EXPERIENCE**

Ms. Peak has served as the principal investigator on a wide range of prehistoric and historic excavations throughout California. She has directed laboratory analyses of archeological materials, including the historic period. She has also conducted a wide variety of cultural resource assessments in California, including documentary research, field survey, Native American consultation and report preparation.

In addition, Ms. Peak has developed a second field of expertise in applied history, specializing in site-specific research for historic period resources. She has completed a number of historical research projects for a wide variety of site types.

Through her education and experience, Ms. Peak meets the Secretary of Interior Standards for historian, architectural historian, prehistoric archeologist and historic archeologist.

**EDUCATION**

M.A. - History - California State University, Sacramento, 1989  
Thesis: *The Bellevue Mine: A Historical Resources Management Site Study in Plumas and Sierra Counties, California*  
B.A. - Anthropology - University of California, Berkeley

**RECENT PROJECTS**

In recent months, Ms. Peak has completed several determinations of eligibility and effect documents in coordination with the Corps of Engineers for projects requiring federal permits, assessing the eligibility of a number of sites for the National Register of Historic Places.

She has also completed historical research projects on a wide variety of topics for a number of projects including the development of navigation and landings on the Napa River, wineries, farmhouses dating to the 1860s, bridges, an early roadhouse, Folsom Dam and a section of an electric railway line.

In recent years, Ms. Peak has prepared a number of cultural resource overviews and predictive models for blocks of land proposed for future development for general and specific plans. She has been able to direct a number of surveys of these areas, allowing the model to be tested.

She served as principal investigator for the multi-phase Twelve Bridges Golf Club project in Placer County. She served as liaison with the various agencies, helped prepare the historic properties treatment plan, managed the various phases of test and data recovery excavations, and completed the final report on the analysis of the test phase excavations of a number of prehistoric sites. She is currently involved as the principal investigator for the Teichert Quarry project adjacent to Twelve Bridges in the City of Rocklin, coordinating contacts with Native Americans, the Corps of Engineers and the Office of Historic Preservation.

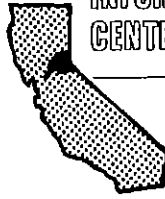
Ms. Peak has served as project manager for a number of major survey and excavation projects in recent years, including the many surveys and site definition excavations for the 172-mile-long Pacific Pipeline proposed for construction in Santa Barbara, Ventura and Los Angeles counties. She also completed an archival study in the City of Los Angeles for the project. She also served as principal investigator for a major coaxial cable removal project for AT&T.

Additionally, she completed a number of small surveys, served as a construction monitor at several urban sites, and conducted emergency recovery excavations for sites found during monitoring. She has directed the excavations of several historic complexes in Sacramento, Placer and El Dorado Counties.

Ms. Peak is the author of a chapter and two sections of a published history (1999) of Sacramento County, *Sacramento: Gold Rush Legacy, Metropolitan Legacy*. She served as the consultant for a children's book on California, published by Capstone Press in 2003 in the Land of Liberty series.

**APPENDIX 2**

**NCIC Record Search (2022)**



5/28/2021

NCIC File No.: PLA-21-36

Emilie Zelazo  
Ascent Environmental  
455 Capitol Mall, Suite 300  
Sacramento, CA 95814

Re: Roseville Industrial Park

The North Central Information Center received your records search request for the project area referenced above, located on the Pleasant Grove USGS 7.5' quad. The following reflects the results of the records search for the project area and a 1/2-mi radius.

As indicated on the data request form, the locations of resources and reports are provided in the following format:  custom GIS maps  shapefiles

Recorded resources within project area:	None
Recorded resources outside project area, within radius:	None
Known reports within project area:	2807 6698 7625 11450 11732
Known reports outside project area, within radius:	2699 2808 7130 7609 9912 11447

**Resource Database Printout (list):**

enclosed  not requested  nothing listed/NA

**Resource Database Printout (details):**

enclosed  not requested  nothing listed/NA

**Resource Digital Database Records:**

enclosed  not requested  nothing listed/NA

**Report Database Printout (list):**

enclosed  not requested  nothing listed/NA

**Report Database Printout (details):**

enclosed  not requested  nothing listed/NA

**Report Digital Database Records:**

enclosed  not requested  nothing listed/NA

**Resource Record Copies:**

enclosed  not requested  nothing listed/NA

**Report Copies:**

enclosed  not requested  nothing listed/NA

**Built Environment Resources Directory:**       enclosed    not requested    nothing listed/NA

**Archaeological Determinations of Eligibility:**    enclosed    not requested    nothing listed/NA

**CA Inventory of Historic Resources (1976):**    enclosed    not requested    nothing listed/NA

**Caltrans Bridge Survey:**                               enclosed    not requested    nothing listed/NA

**Ethnographic Information:**                            enclosed    not requested    nothing listed/NA

**Historical Literature:**                                  enclosed    not requested    nothing listed/NA

**Historical Maps:**                                         enclosed    not requested    nothing listed/NA

**Local Inventories:**                                      enclosed    not requested    nothing listed/NA

**GLO and/or Rancho Plat Maps:**                    enclosed    not requested    nothing listed/NA

**Shipwreck Inventory:**                                enclosed    not requested    nothing listed/NA

**Soil Survey Maps:**                                     enclosed    not requested    nothing listed/NA

Please forward a copy of any resulting reports from this project to the office as soon as possible. Due to the sensitive nature of archaeological site location data, we ask that you do not include resource location maps and resource location descriptions in your report if the report is for public distribution. If you have any questions regarding the results presented herein, please contact the office at the phone number listed above.

The provision of CHRIS Data via this records search response does not in any way constitute public disclosure of records otherwise exempt from disclosure under the California Public Records Act or any other law, including, but not limited to, records related to archeological site information maintained by or on behalf of, or in the possession of, the State of California, Department of Parks and Recreation, State Historic Preservation Officer, Office of Historic Preservation, or the State Historical Resources Commission.

Due to processing delays and other factors, it is possible that not all of the historical resource reports and resource records that have been submitted to the Office of Historic Preservation are available via this records search. Additional information may be available through the federal, state, and local agencies that produced or paid for historical resource management work in the search area. Additionally, Native American tribes have historical resource information not in the California Historical Resources Information System (CHRIS) Inventory, and you should contact the California Native American Heritage Commission for information on local/regional tribal contacts.

Should you require any additional information for the above referenced project, reference the record search number listed above when making inquiries. Requests made after initial invoicing will result in the preparation of a separate invoice.

Sincerely,

Paul Rendes, Coordinator  
North Central Information Center



11/17/2022

NCIC File No.: PLA-22-118

Robert Gerry  
Peak & Associates, Inc.  
3941 Park Drive, Ste 20-329  
El Dorado Hills, CA 95762

Re: Roseville Industrial Park

The North Central Information Center (NCIC) received your records search request for the project area referenced above, located on the Pleasant Grove USGS 7.5' quad. The following reflects the results of the records search for the project area and a 1/4-mi radius.

As indicated on the data request form, the locations of resources and reports are provided in the following format:  custom GIS maps  GIS data

Recorded resources within project area:	None
Recorded resources outside project area, within radius:	None
Known reports within project area:	7625 11732
Known reports outside project area, within radius:	2699 2807 6698 7130 7609 9912 11447 11450

- Resource Database Printout (list):**  enclosed  not requested  nothing listed/NA
- Resource Database Printout (details):**  enclosed  not requested  nothing listed/NA
- Resource Digital Database Records:**  enclosed  not requested  nothing listed/NA
- Report Database Printout (list):**  enclosed  not requested  nothing listed/NA
- Report Database Printout (details):**  enclosed  not requested  nothing listed/NA
- Report Digital Database Records:**  enclosed  not requested  nothing listed/NA
- Resource Record Copies:**  enclosed  not requested  nothing listed/NA
- Report Copies:**  enclosed  not requested  nothing listed/NA
- Built Environment Resources Directory:**  enclosed  not requested  nothing listed/NA
- Archaeological Resources Directory:**  enclosed  not requested  nothing listed/NA
- CA Inventory of Historic Resources (1976):**  enclosed  not requested  nothing listed/NA

- Caltrans Bridge Survey:**                     enclosed    not requested    nothing listed/NA
- Ethnographic Information:**                 enclosed    not requested    nothing listed/NA
- Historical Literature:**                       enclosed    not requested    nothing listed/NA
- Historical Maps:**                             enclosed    not requested    nothing listed/NA
- Local Inventories:**                          enclosed    not requested    nothing listed/NA
- GLO and/or Rancho Plat Maps:**          enclosed    not requested    nothing listed/NA
- Shipwreck Inventory:**                     enclosed    not requested    nothing listed/NA
- Soil Survey Maps:**                          enclosed    not requested    nothing listed/NA

Please forward a copy of any resulting reports and resource records from this project to NCIC as soon as possible. The lead agency/authority and cultural resources consultant should coordinate sending documentation to NCIC. Digital materials are preferred and can be sent to our office via our file transfer system. Please contact NCIC for instructions. Due to the sensitive nature of archaeological site location data, we ask that you do not include resource location maps and resource location descriptions in your report if the report is for public distribution. If you have any questions regarding the results presented herein, please contact the office at the phone number listed above.

The provision of CHRIS Data via this records search response does not in any way constitute public disclosure of records otherwise exempt from disclosure under the California Public Records Act or any other law, including, but not limited to, records related to archeological site information maintained by or on behalf of, or in the possession of, the State of California, Department of Parks and Recreation, State Historic Preservation Officer, Office of Historic Preservation, or the State Historical Resources Commission.

Due to processing delays and other factors, it is possible that not all of the historical resource reports and resource records that have been submitted to the Office of Historic Preservation are available via this records search. Additional information may be available through the federal, state, and local agencies that produced or paid for historical resource management work in the search area. Additionally, Native American tribes have historical resource information not in the California Historical Resources Information System (CHRIS) Inventory, and you should contact the California Native American Heritage Commission for information on local/regional tribal contacts.

Should you require any additional information for the above referenced project, reference the records search number listed above when making inquiries. Requests made after initial invoicing will result in the preparation of a separate invoice.

Sincerely,

Paul Rendes, Coordinator  
North Central Information Center

**APPENDIX 3 (2021)**

**Native American  
Consultation**



## NATIVE AMERICAN HERITAGE COMMISSION

June 29, 2021

CHAIRPERSON  
**Laura Miranda**  
Luiseño

Emilie Zelazo, Environmental Planner, Cultural Resource Specialist  
Ascent Environmental

Via Email to: [emilie.zelazo@ascentenvironmental.com](mailto:emilie.zelazo@ascentenvironmental.com)

VICE CHAIRPERSON  
**Reginald Pagaling**  
Chumash

**Re: Roseville Industrial Park Project, Placer County**

SECRETARY  
**Merri Lopez-Kelfer**  
Luiseño

Dear Ms. Zelazo:

PARLIAMENTARIAN  
**Russell Attebery**  
Karuk

A record search of the Native American Heritage Commission (NAHC) Sacred Lands File (SLF) was completed for the information you have submitted for the above referenced project. The results were negative. However, the absence of specific site information in the SLF does not indicate the absence of cultural resources in any project area. Other sources of cultural resources should also be contacted for information regarding known and recorded sites.

COMMISSIONER  
**William Mungary**  
Paiute/White Mountain  
Apache

Attached is a list of Native American tribes who may also have knowledge of cultural resources in the project area. This list should provide a starting place in locating areas of potential adverse impact within the proposed project area. I suggest you contact all of those indicated; if they cannot supply information, they might recommend others with specific knowledge. By contacting all those listed, your organization will be better able to respond to claims of failure to consult with the appropriate tribe. If a response has not been received within two weeks of notification, the Commission requests that you follow-up with a telephone call or email to ensure that the project information has been received.

COMMISSIONER  
**Julle Tumamait-Stensile**  
Chumash

COMMISSIONER  
[Vacant]

If you receive notification of change of addresses and phone numbers from tribes, please notify me. With your assistance, we can assure that our lists contain current information.

COMMISSIONER  
[Vacant]

If you have any questions or need additional information, please contact me at my email address: [Sarah.Fonseca@nahc.ca.gov](mailto:Sarah.Fonseca@nahc.ca.gov).

COMMISSIONER  
[Vacant]

Sincerely,

EXECUTIVE SECRETARY  
**Christina Sneider**  
Pomo

Sarah Fonseca  
Cultural Resources Analyst

**NAHC HEADQUARTERS**  
1550 Harbor Boulevard  
Suite 100  
West Sacramento,  
California 95691  
(916) 373-3710  
[nahc@nahc.ca.gov](mailto:nahc@nahc.ca.gov)  
[NAHC.ca.gov](http://NAHC.ca.gov)

Attachment

Native American Heritage Commission  
Native American Contact List  
Placer County  
6/29/2021

**Tsi Akim Maidu**

Grayson Coney, Cultural Director  
P.O. Box 510 Maidu  
Browns Valley, CA, 95918  
Phone: (530) 383 - 7234  
tsi-akim-maidu@att.net

**Colfax-Todds Valley**

**Consolidated Tribe**  
Pamela Cubbler, Treasurer  
P.O. Box 4884 Maidu  
Auburn, CA, 95604 Miwok  
Phone: (530) 320 - 3943  
pcubbler@colfaxrancheria.com

**United Auburn Indian  
Community of the Auburn  
Rancheria**

Gene Whitehouse, Chairperson  
10720 Indian Hill Road Maidu  
Auburn, CA, 95603 Miwok  
Phone: (530) 883 - 2390  
Fax: (530) 883-2380  
bguth@auburnrancheria.com

**Wilton Rancheria**

Jesus Tarango, Chairperson  
9728 Kent Street Miwok  
Elk Grove, CA, 95624  
Phone: (916) 683 - 6000  
Fax: (916) 683-6015  
jtarango@wiltonrancheria-nsn.gov

**Wilton Rancheria**

Steven Hutchason, THPO  
9728 Kent Street Miwok  
Elk Grove, CA, 95624  
Phone: (916) 683 - 6000  
Fax: (916) 863-6015  
shutchason@wiltonrancheria-nsn.gov

**Wilton Rancheria**

Dahlton Brown, Director of  
Administration  
9728 Kent Street Miwok  
Elk Grove, CA, 95624  
Phone: (916) 683 - 6000  
dbrown@wiltonrancheria-nsn.gov

**Colfax-Todds Valley**

**Consolidated Tribe**  
Clyde Prout, Chairperson  
P.O. Box 4884 none Maidu  
Auburn, CA, 95604 Miwok  
Phone: (530) 577 - 3558  
miwokmaidu@yahoo.com

This list is current only as of the date of this document. Distribution of this list does not relieve any person of statutory responsibility as defined in Section 7050.5 of the Health and Safety Code, Section 5097.94 of the Public Resource Section 5097.98 of the Public Resources Code.

This list is only applicable for contacting local Native Americans with regard to cultural resources assessment for the proposed Roseville Industrial Park Project, Placer County.



## NATIVE AMERICAN HERITAGE COMMISSION

October 14, 2022

Robert Gerry  
Peak & Associates Inc.

Via Email to: [peakinc@surewest.net](mailto:peakinc@surewest.net)

**Re: Roseville Industrial Park Project, Placer County**

Dear Mr. Gerry:

A record search of the Native American Heritage Commission (NAHC) Sacred Lands File (SLF) was completed for the information you have submitted for the above referenced project. The results were negative. However, the absence of specific site information in the SLF does not indicate the absence of cultural resources in any project area. Other sources of cultural resources should also be contacted for information regarding known and recorded sites.

Attached is a list of Native American tribes who may also have knowledge of cultural resources in the project area. This list should provide a starting place in locating areas of potential adverse impact within the proposed project area. I suggest you contact all of those indicated; if they cannot supply information, they might recommend others with specific knowledge. By contacting all those listed, your organization will be better able to respond to claims of failure to consult with the appropriate tribe. If a response has not been received within two weeks of notification, the Commission requests that you follow-up with a telephone call or email to ensure that the project information has been received.

If you receive notification of change of addresses and phone numbers from tribes, please notify me. With your assistance, we can assure that our lists contain current information.

If you have any questions or need additional information, please contact me at my email address: [Pricilla.Torres-Fuentes@nahc.ca.gov](mailto:Pricilla.Torres-Fuentes@nahc.ca.gov).

Sincerely,

*Pricilla Torres-Fuentes*

Pricilla Torres-Fuentes  
Cultural Resources Analyst

Attachment

CHAIRPERSON  
**Laura Miranda**  
Luiseño

VICE CHAIRPERSON  
**Reginald Pagaling**  
Chumash

PARLIAMENTARIAN  
**Russell Atebery**  
Koruk

SECRETARY  
**Sara Dutschke**  
Miwok

COMMISSIONER  
**William Mungary**  
Paiute/White Mountain  
Apache

COMMISSIONER  
**Isaac Bojorquez**  
Ohlone-Costanoan

COMMISSIONER  
**Buffy McQuillen**  
Yokayo Pomo, Yuki,  
Nomlaki

COMMISSIONER  
**Wayne Nelson**  
Luiseño

COMMISSIONER  
**Stanley Rodriguez**  
Kumeyaay

EXECUTIVE SECRETARY  
**Raymond C.  
Hilchcock**  
Miwok/Nisenan

**NAHC HEADQUARTERS**  
1550 Harbor Boulevard  
Suite 100  
West Sacramento,  
California 95691  
(916) 373-3710  
[nahc@nahc.ca.gov](mailto:nahc@nahc.ca.gov)

**Native American Heritage Commission  
Native American Contact List  
Placer County  
10/14/2022**

**Shingle Springs Band of Miwok  
Indians**

Regina Cuellar, Chairperson  
P.O. Box 1340  
Shingle Springs, CA, 95682  
Phone: (530) 387 - 4970  
Fax: (530) 387-8067  
rcuellar@ssband.org

Maidu  
Miwok

**Tsi Akim Maidu**

Grayson Coney, Cultural Director  
P.O. Box 510  
Browns Valley, CA, 95918  
Phone: (530) 383 - 7234  
tsi-akim-maidu@att.net

Maidu

**United Auburn Indian  
Community of the Auburn  
Rancheria**

Gene Whitehouse, Chairperson  
10720 Indian Hill Road  
Auburn, CA, 95603  
Phone: (530) 883 - 2390  
Fax: (530) 883-2380  
bguth@auburnrancheria.com

Maidu  
Miwok

**Wilton Rancheria**

Jesus Tarango, Chairperson  
9728 Kent Street  
Elk Grove, CA, 95624  
Phone: (916) 683 - 6000  
Fax: (916) 683-6015  
jtarango@wiltonrancheria-nsn.gov

Miwok

**Wilton Rancheria**

Dahlton Brown, Director of  
Administration  
9728 Kent Street  
Elk Grove, CA, 95624  
Phone: (916) 683 - 6000  
dbrown@wiltonrancheria-nsn.gov

Miwok

**Wilton Rancheria**

Steven Hutchason, THPO  
9728 Kent Street  
Elk Grove, CA, 95624  
Phone: (916) 683 - 6000  
Fax: (916) 863-6015  
shutchason@wiltonrancheria-  
nsn.gov

Miwok

**Colfax-Todds Valley  
Consolidated Tribe**

Clyde Prout, Chairperson  
P.O. Box 4884 none  
Auburn, CA, 95604  
Phone: (916) 577 - 3558  
miwokmaidu@yahoo.com

Maidu  
Miwok

**Colfax-Todds Valley  
Consolidated Tribe**

Pamela Cubbler, Treasurer  
P.O. Box 4884  
Auburn, CA, 95604  
Phone: (530) 320 - 3943  
pcubbler@colfaxrancheria.com

Maidu  
Miwok

**Nevada City Rancheria Nisenan  
Tribe**

Richard Johnson, Chairman  
P.O. Box 2624  
Nevada City, CA, 95959  
Phone: (530) 570 - 0846  
shelly@nevadacityrancheria.org

Nisenan

**Nevada City Rancheria Nisenan  
Tribe**

Shelly Covert, Tribal Secretary  
P.O. Box 2226  
Nevada City, CA, 95959  
Phone: (530) 570 - 0846  
shelly@nevadacityrancheria.org

Nisenan

**Nevada City Rancheria Nisenan  
Tribe**

Saxon Thomas, Tribal Council  
Member  
P.O. Box 2226  
Nevada City, CA, 95959  
Phone: (530) 570 - 0846  
shelly@nevadacityrancheria.org

Nisenan

This list is current only as of the date of this document. Distribution of this list does not relieve any person of statutory responsibility as defined in Section 7050.5 of the Health and Safety Code, Section 5097.94 of the Public Resource Section 5097.98 of the Public Resources Code.

This list is only applicable for contacting local Native Americans with regard to cultural resources assessment for the proposed Roseville Industrial Park Project, Placer County.

**APPENDIX 4**

**Site Records**

State of California The Resources Agency  
DEPARTMENT OF PARKS AND RECREATION  
**PRIMARY RECORD**

Primary #  
HRI #  
Trinomial  
NRHP Status Code 6Z

Other Listings  
Review Code                      Reviewer                      Date

Page 1 of 3 \*Resource Name or #: (Assigned by recorder) RIP ISO-1

**P1. Other Identifier:** \_\_\_\_\_

\*P2. Location:  Not for Publication     Unrestricted

\*a. County Sacramento and (P2c, P2e, and P2b or P2d. Attach a Location Map as necessary.)

\*b. USGS 7.5' Quad Pleasant Grove Date 2015 T 11N ; R 5E of Sec 14 & 15 ; 10S B.M.

c. Address 6382 Phillip Road City Roseville Zip 95747

d. UTM: (Give more than one for large and/or linear resources) Zone 10S , 639043.409mE/ 4296088.424mN

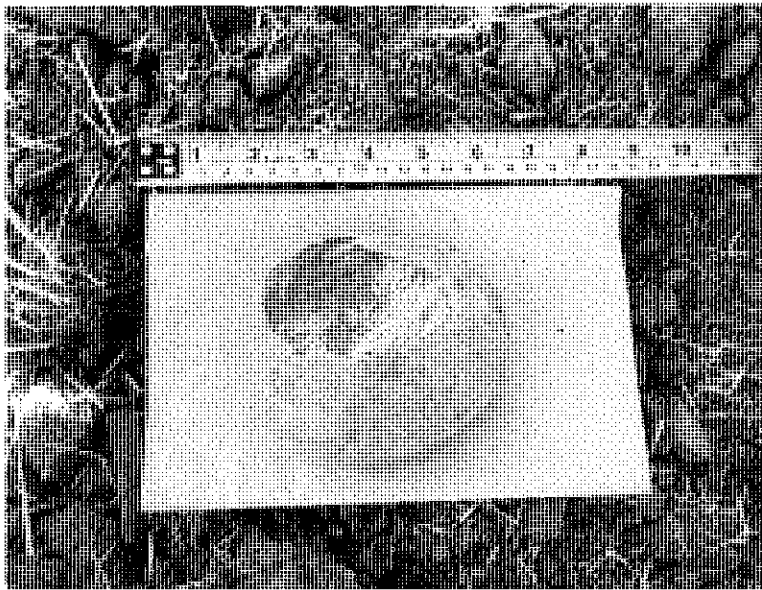
e. Other Locational Data: (e.g., parcel #, directions to resource, elevation, decimal degrees, etc., as appropriate)  
APN 017-101-008-000; The isolate is located about 426 east of the gate located at the bend of Phillips Road.

\*P3a. Description: (Describe resource and its major elements. Include design, materials, condition, alterations, size, setting, and boundaries)

This isolate was recorded as part of the Roseville Industrial Park Project, located in rural Roseville, Sacramento County. The isolate consists of a circular shaped unifacial granite handstone (ground stone tool). It was fashioned from a river worn cobble and measures 10 cm long by 8.5 cm wide by 6.4 cm thick. The cobble is light grey in color and has a fine-grained texture. Only a portion of the ventral side exhibits use wear; the distal ends show no wear while wear to the proximal end may exhibit some use (see Photo 1). Shaping may be present on the left side. The handstone has been recently chipped on the dorsal side by farm equipment; the chip was fresh and edges sharp. It should be noted that almost no stone was observed in the surrounding fields, supporting a conclusion that this item was transported to the area sometime in the past, i.e., the handstone is also a manuport. Pleasant Grove Creek is located 740 feet to the north from this position.

\*P3b. Resource Attributes: (List attributes and codes) AP 16 other: isolate

P5a. Photograph or Drawing (Photograph required for buildings, structures, and objects.)



\*P4. Resources Present:  Building  
 Structure  Object  Site  District  Element of District  Other (Isolates, etc.)

P5b. Description of Photo: (view, date, accession #) Plan view of RIP ISO-1 Dorsal side

\*P6. Date Constructed/Age and Source:  Historic  Prehistoric  
 Both

\*P7. Owner and Address:  
City of Roseville  
311 Vernon Street  
Roseville, CA 95678

\*P8. Recorded by: (Name, affiliation, and address)  
Emilie Zelazo  
Ascent Environmental, Inc.  
455 Capitol Mall, Ste 300  
Sacramento, CA 95814

\*P9. Date Recorded: July 6, 2021

\*P10. Survey Type: (Describe)  
Intensive

\*P11. Report Citation: (Cite survey report and other sources, or enter "none.")

Zelazo, Emilie. 2021. Cultural Resources Assessment Report for the Roseville Industrial Project. Prepared for Panattoni Development Company, Inc., Sacramento.

\*Attachments:  NONE     Location Map     Continuation Sheet     Building, Structure, and Object Record  
 Archaeological Record     District Record     Linear Feature Record     Milling Station Record     Rock Art Record  
 Artifact Record     Photograph Record     Other (List): \_\_\_\_\_

## CONTINUATION SHEET

Page 2 of 3

\*Resource Name or # (Assigned by recorder) RIP ISO-1

\*Recorded by: Emilie Zelazo

\*Date July 6, 2021

1

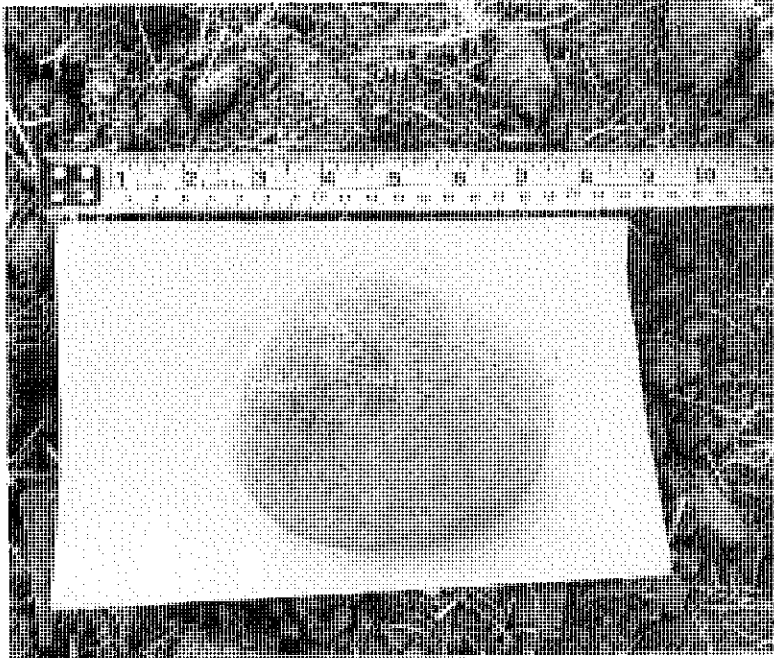


Photo 1. Ventral side. Taken July 6, 2021.

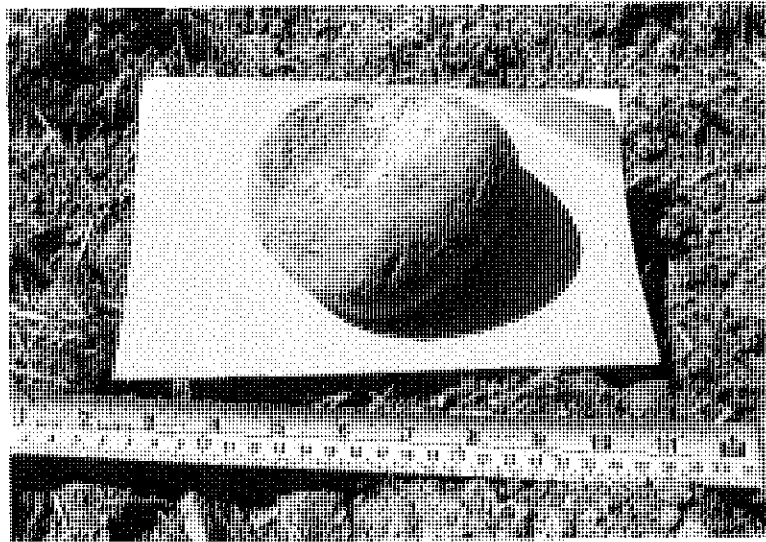
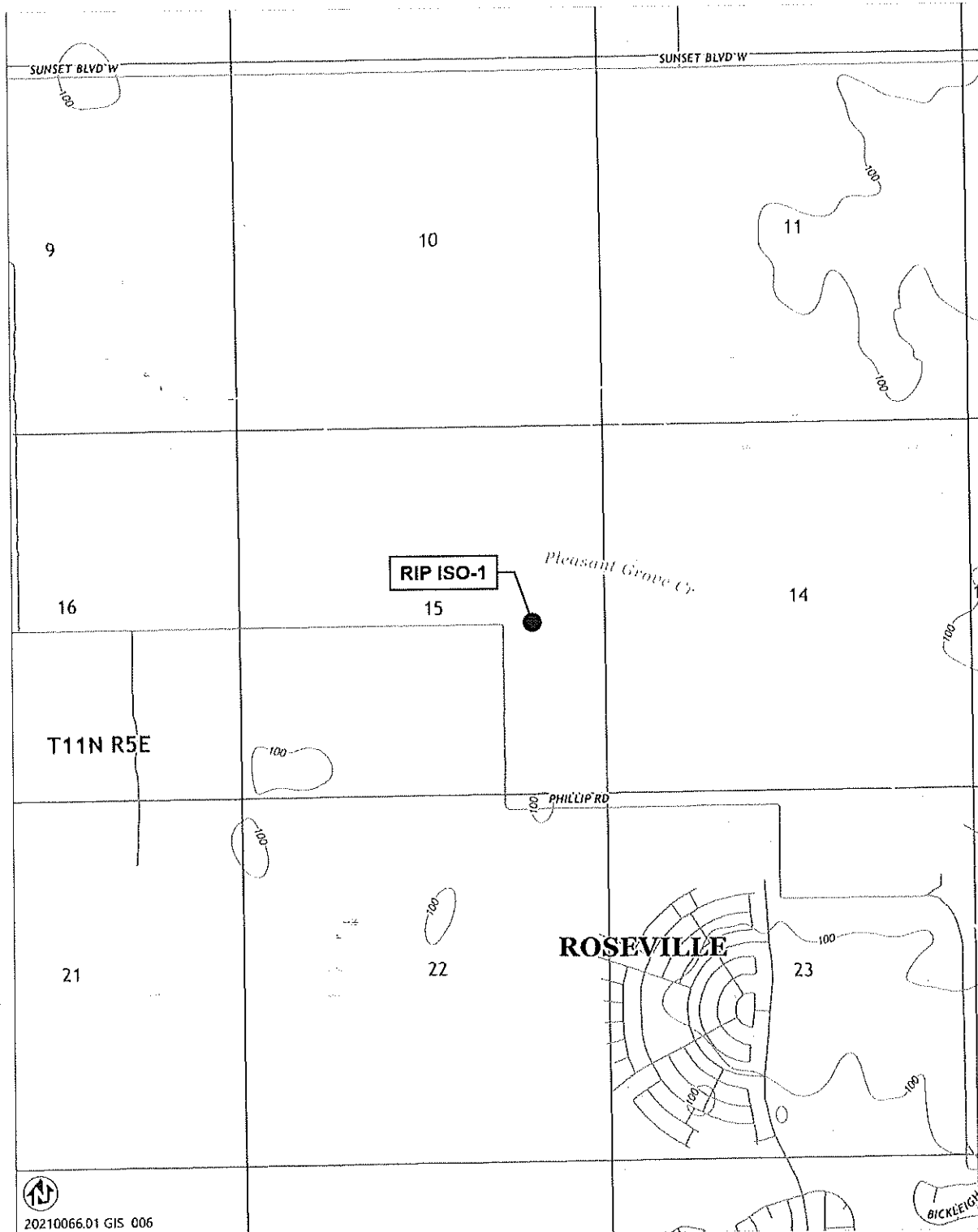


Photo 2. Proximal end, with left side showing possible edge wear. Dorsal side facing up. Taken July 6, 2021.



20210066.D1 GIS 006

State of California & The Resources Agency  
DEPARTMENT OF PARKS AND RECREATION  
**PRIMARY RECORD**

Primary #  
HRI #  
Trinomial  
NRHP Status Code 6Z

Other Listings  
Review Code

Reviewer

Date

Page 1 of 2 \*Resource Name or #: (Assigned by recorder) RIP ISO-2

**P1. Other Identifier:** \_\_\_\_\_

\*P2. Location:  Not for Publication  Unrestricted a

\*a. County Sacramento and (P2c, P2e, and P2b or P2d. Attach a Location Map as necessary.)

\*b. USGS 7.5' Quad Pleasant Grove Date 2015 T 11N ; R 5E of Sec 14 & 15 ; 10S B.M.

c. Address 6382 Phillip Road City Roseville Zip 95747

d. UTM: Zone 10S, 639043.947mE/ 4296088.424mN NE Corner; 6309009.88mE/ 4296033.752mN SE Corner;  
639000.646mE/ 4296035.255mN NW Corner; 639001.121mE/ 4296038.883mN SW Corner

e. Other Locational Data: APN 017-101-008-000; located about 262 feet southeast of the gate located at the bend of Phillips Road.

\*P3a. **Description:** This isolate was recorded as part of the Roseville Industrial Park Project, located in rural Roseville, Placer County. RIP ISO-2 is a segmented rectangular concrete pad measuring 12 feet wide and 30 feet long. It is located 262 feet southeast of the gate on Phillip Road, at the west terminus of the berm/levee which divides the south fields. The concrete is light gray, very smooth and fine grained. No evidence of infrastructure, additional features, or constituents, such as a refuse deposit, was found in association with the pad. It is in overall good condition, with detritus covering the sections and growing in between the seams; spalling was minimal. A large fallen oak tree trunk was located to the east. Based on historic topographic maps and aerials, it is likely that this pad is the remnant of a structure that was constructed on the property sometime between 1942 and 1957 (NETR 2021). By 2005, all structures appear to have been removed from the property and the large oak tree to the east had fallen.

Reference: National Environmental Title Research (NETR), LLC. 2021. 1910, 1942, 1954, 1959, 1962, 1968, 1981, and 2012 USGS Topographic Maps, and 1947, 1957, 1966, 1993, 1998, 2002, and 2005 Aerial Photographs. Available: <http://www.historicaerials.com/>.

\*P3b. **Resource Attributes:** (List attributes and codes) AH2 foundations/structure pads

\*P4. Resources Present:  Building  Structure  Object  Site  District  Element of District  Other (Isolates, etc.)



P5b. Description of Photo: Overview of RIP ISO-2. View to west.

\*P6. **Date Constructed/Age and Source:**  Historic  Prehistoric  
 Both Historic aerials

\*P7. **Owner and Address:**  
City of Roseville  
311 Vernon Street  
Roseville, CA 95678

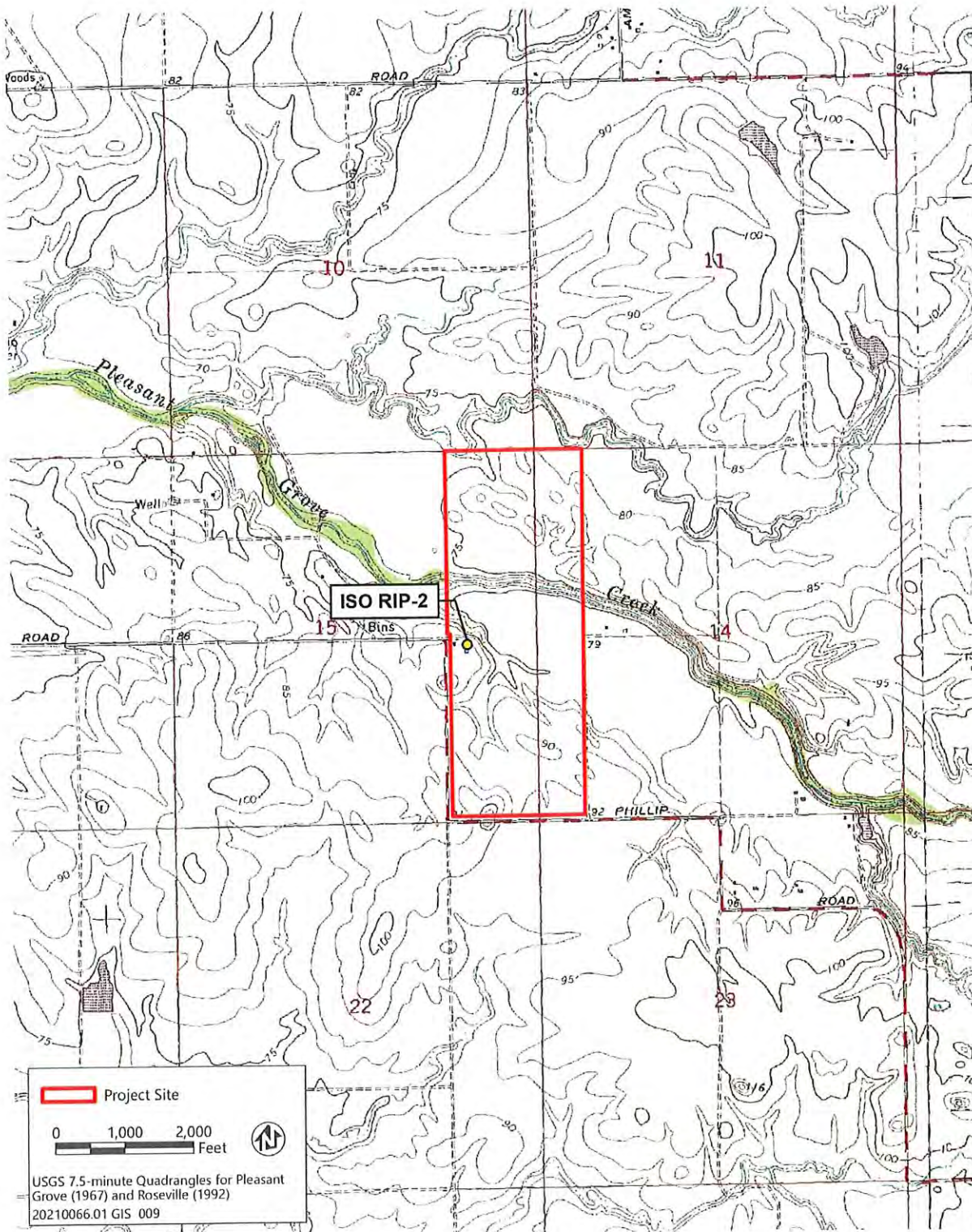
\*P8. **Recorded by:**  
Emilie Zelazo  
Ascent Environmental, Inc.  
455 Capitol Mall, Ste 300  
Sacramento, CA 95814

\*P9. **Date Recorded:** July 6, 2021

\*P10. **Survey Type:** Intensive

\*P11. **Report Citation:** Zelazo, Emilie.  
2021. Cultural Resources Assessment  
Report for the Roseville Industrial Project.  
Prepared for Panattoni Development  
Company, Inc., Sacramento.

\*Attachments:  NONE  Location Map  Continuation Sheet  Building, Structure, and Object Record  
 Archaeological Record  District Record  Linear Feature Record  Milling Station Record  Rock Art Record  
 Artifact Record  Photograph Record  Other (List): Sketch Map





**BUILDING, STRUCTURE, AND OBJECT RECORD**

\*Resource Name or # (Assigned by recorder) 6382 Phillip Road Levees

B1. Historic Name:  
B2. Common Name:  
B3. Original Use: Levee System  
B4. Present Use: Levee System

\*B5. Architectural Style:

\*B6. Construction History: (Construction date, alterations, and date of alterations)  
Constructed between 1920s and the present

\*B7. Moved?  No  Yes (C)  Unknown Date: Original Location:

\*B8. Related Features: None

B9a. Architect: Unknown

b. Builder: Unknown

Area:

\*B10. Significance: Theme:

Period of Significance:

Property Type:

Applicable Criteria:

(Discuss importance in terms of historical or architectural context as defined by theme, period, and geographic scope. Also address integrity.)

The quality of significance in American history, architecture or archaeology is present in sites, buildings, structures and objects that are associated with events significant in our past, associated with people significant in our past, or that represent the work of a master or possess high artistic values, or that have yielded or are likely to yield information important in prehistory or history.

The levees vary in length and some follow contours rather than straight lines used for many types of agricultural production. The levees appear to have been moved and enlarged several times in response to changing crops and increased floodwater flows (aerial photography). Some may have been to protect long term crops such as orchards from flooding; other levees may have been used to maintain water for the crops such as rice. Some of the levees may be as early as the 1920s and built as federal flood control projects. The latest ones appear to date to the 1960s, related to rice production.

The use of levees for controlling water is common throughout California and many other locations nationwide. The presence of the levees on this property for floodwater management associated with agriculture is in no way distinctive and does not confer importance to the features. Many better examples exist elsewhere in conjunction with the development of California agriculture.

We could not find a positive correlation between landowners with the construction of the levees. Without a single creator identified, there is no association with persons significant in the past.

The levee are simple features, likely constructed on an ad hoc basis, with no formal plan. No further information valuable for local history can be derived from further study of the levees.

The levees recorded within the project area are not eligible for the National Register of Historic Places or the California Register of Historic Resources.

B11. Additional Resource Attributes: (List attributes and codes) none

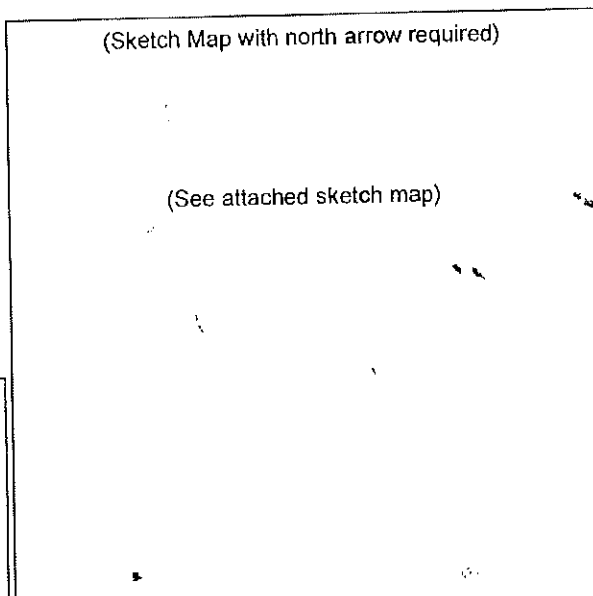
\*B12. References:

B13. Remarks:

\*B14. Evaluator: M. Peak

\*Date of Evaluation: 2025

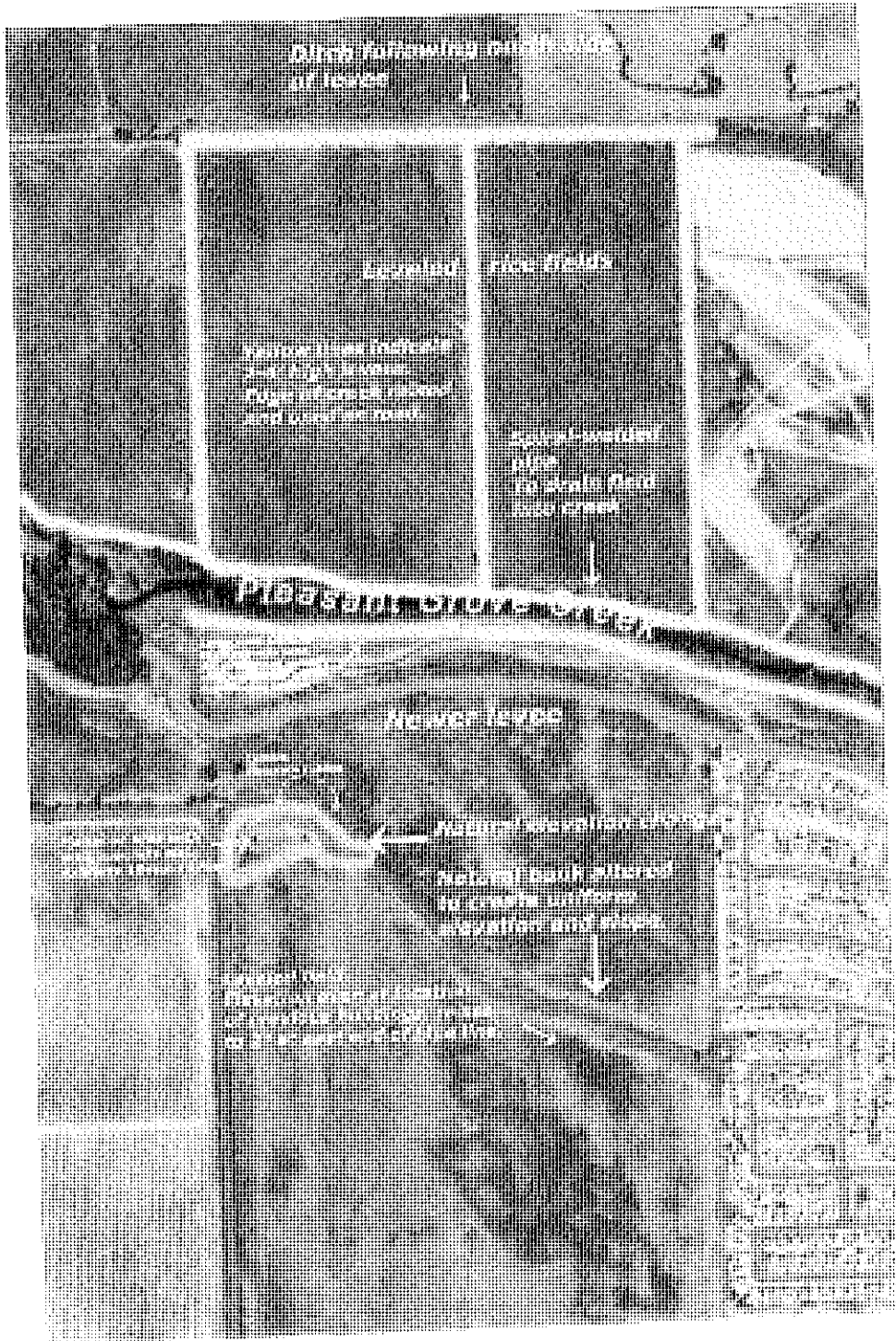
(This space reserved for official comments.)



\*Required information

Page 3 of        \*Resource Name or # (Assigned by recorder) 6382 Phillip Road Levees

\*Drawn by: Mike Lawson \*Date of map: 2025



# CONTINUATION SHEET

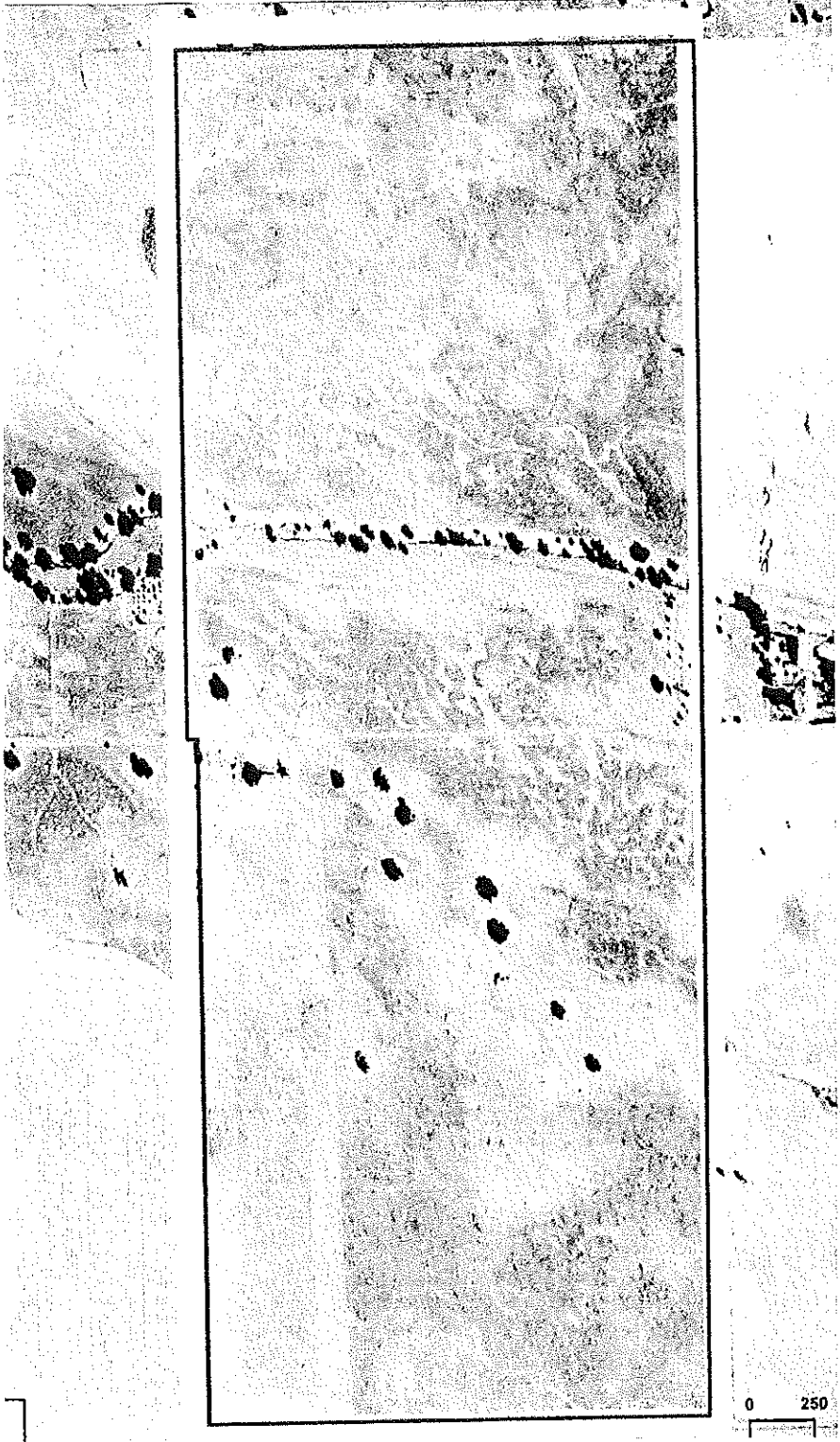
Property Name: 6832 Phillip Road

Page 4 of 9

1952 Aerial Photo

Creek is levied but

nothing else is

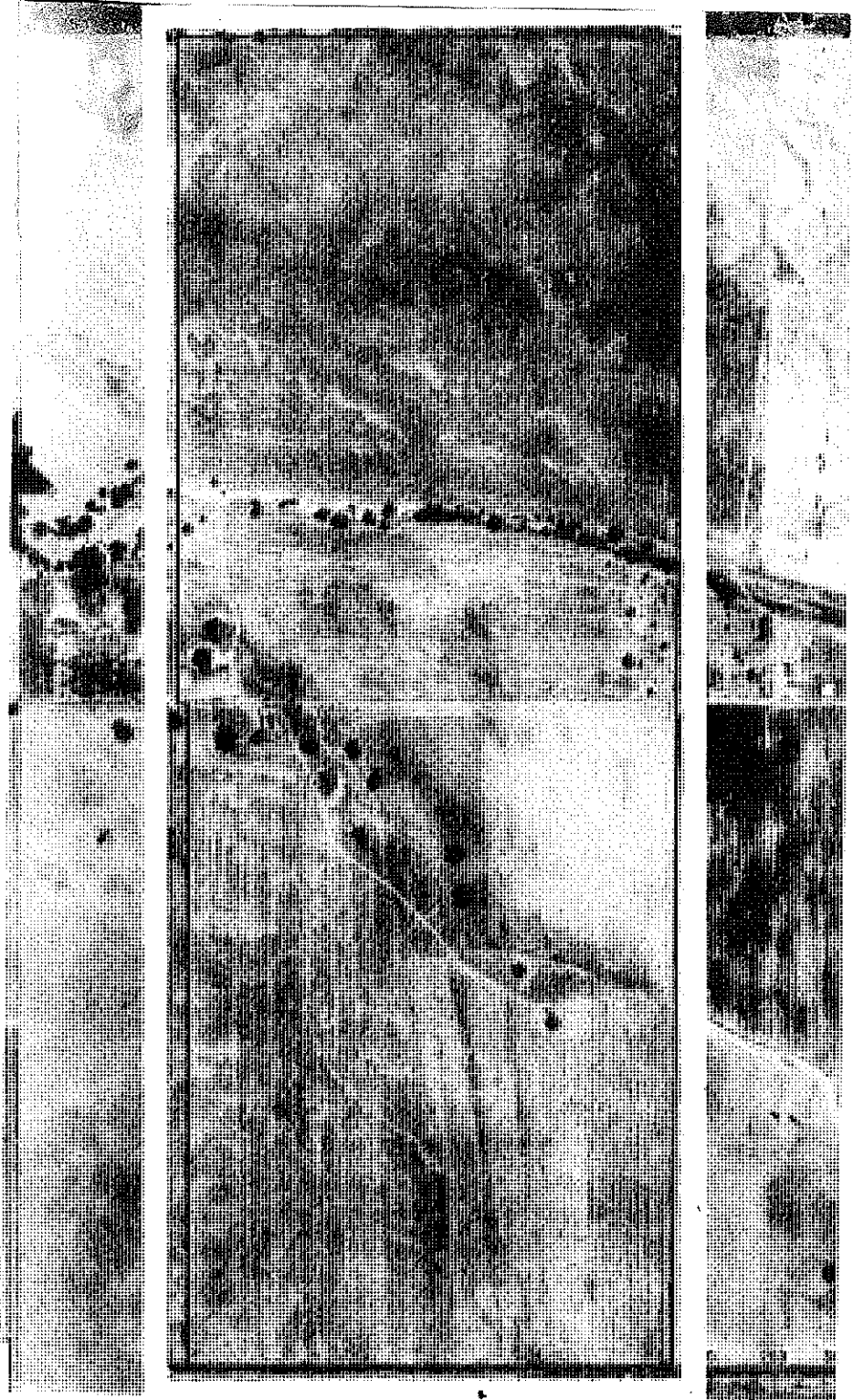


## CONTINUATION SHEET

Property Name: 6832 Phillip Road

Page 5 of 9

1961 Aerial Photo  
Still few levees. The  
overflow channel of  
the creek is clearly a  
problem



## CONTINUATION SHEET

Property Name: 6832 Phillip Road

Page 6 of 9

1993 Aerial Photo

The northern levees  
are in place. The break  
between upper and lower  
fields is established and  
some form of contour farming  
is being practiced.



## CONTINUATION SHEET

Property Name: 6832 Phillip Road

Page 7 of 9

1015 Aerial Photo

The levees are the same,  
but the contour farming  
is not being used.



## CONTINUATION SHEET

Property Name: 6832 Phillip Road

Page 8 of 9

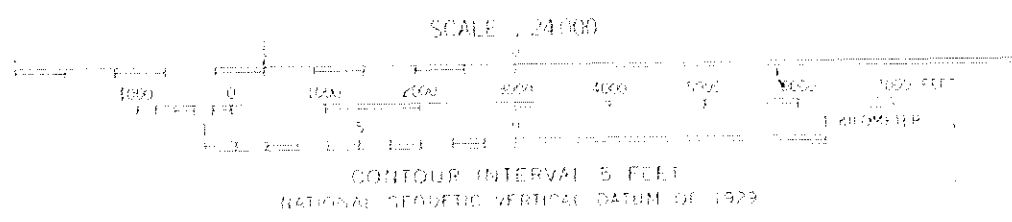
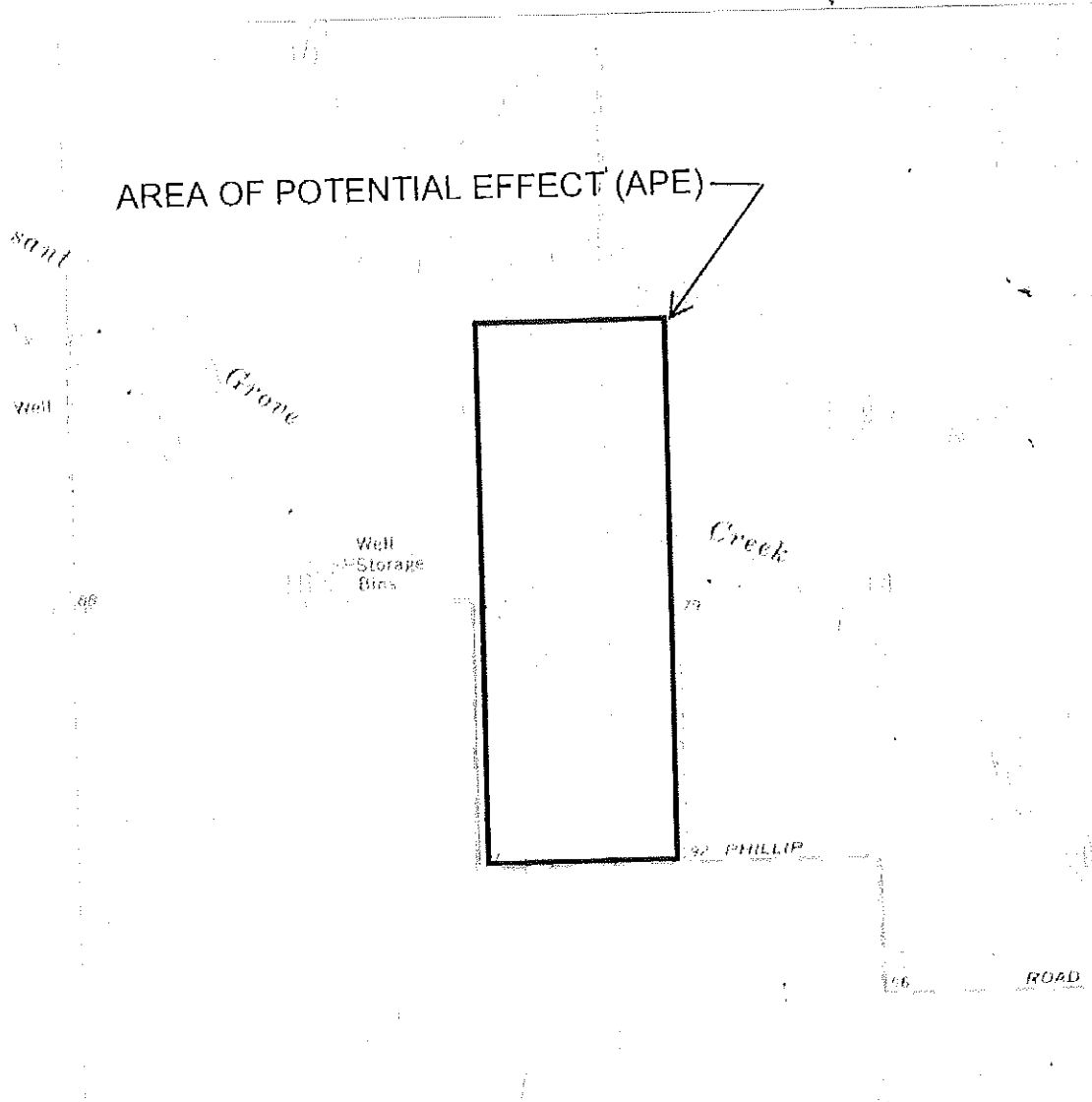
1019 Aerial Photo

The levees are as they are today, but the levee south of the overflow channel is still not constructed.



Page 9 of 9 \*Resource Name or # (Assigned by recorder) 6382 Phillip Road

\*Map Name: Pleasant Grove \*Scale: 1:24,000 \*Date of map: 1967 (PR81)



## **APPENDIX 5**

### **Extended PUE Search**

# **PHILLIP ROAD P.UCE. PROJECT SUMMARY OF EFFORTS TO IDENTIFY CULTURAL RESOURCES**

## **INTRODUCTION**

Additional research has been undertaken on the 70-foot-wide strip of land proposed for use for the installation of an underground high-power line. Three methods have been used to gain more information on cultural resources in the newly added portion of the Area of Potential Effect. This includes:

- a. North Central Information Center Record Search PLA-25-73;
- b. A request for information and a list of appropriate tribal groups. from the Native American Heritage Commission; and a field survey.

### **a. Record Search Results**

There are no recorded sites within the project area and none within the ¼-mile buffer area.

There are eight reports on studies within the project and three reports within the buffer area. The PUCE alignment had been covered by previous surveys.

### **b. NAHC Sacred Lands File Review**

The NAHC reported no identified Sacred Lands in their files, but also provided a list of tribes that are traditionally and culturally affiliated with a project's geographic area. This consultation will be conducted by the Corps of Engineers (Appendix 5).

### **c. Field Survey**

A field survey of the additional extension of the APE has been conducted by a qualified archeologist using 30-foot wide transects. Most of the land had been previously surveyed with negative results.

## **SUMMARY**

The previous surveys and newer work suggest little possibility of prehistoric remnant resources being present. The area is one of low natural water sources. Few prehistoric sites have been found in the dry upland region of Placer County. There is no suggestion of resources present within the new portion of the APE.

**APPENDIX 6**

**Native American  
Consultation (2025)**

## NATIVE AMERICAN HERITAGE COMMISSION

September 30, 2025

Robert Gerry  
Peak & Associates, Inc.Submitted via Electronic  
Via Email to: [robertgerry482@gmail.com](mailto:robertgerry482@gmail.com)

Re: Phillip Road Project, Placer County

To Whom It May Concern:

As requested, a search of the Native American Heritage Commission (NAHC) Sacred Lands File (SLF) was completed based on information submitted for the above referenced project. The results were negative. Be aware that tribes do not always record their sacred sites in the SLF, nor are they required to do so. As such, an SLF search is not a substitute for consultation with all tribes that are traditionally and culturally affiliated with a project's geographic area.

Attached is a list of Native American tribes that are traditionally and culturally affiliated with the project's geographic area. Please contact all of the listed tribes as they may have information about sacred sites within the project area that is not listed with the NAHC.

If within two weeks of notification, a response has not been received, the Commission requests that you follow up with a telephone call or email to ensure that the project information was received.

If you receive notification of a change of address or phone number from a tribe, please inform the NAHC so that we can assure that our lists contain current information.

In addition to engaging in tribal consultation, you should consult the appropriate regional California Historical Research Information System (CHRIS) information center to determine whether it has information regarding the presence of recorded archaeological sites within the project area.

If you have any questions or need additional information, please contact me at: [Pricilla.Torres-Fuentes@nahc.ca.gov](mailto:Pricilla.Torres-Fuentes@nahc.ca.gov).

Sincerely,

*Pricilla Torres-Fuentes*Pricilla Torres-Fuentes  
Cultural Resources Analyst

Attachment

CHAIRPERSON  
REGINALD PAGALING  
CHUMASHVICE-CHAIRPERSON  
BUFFY MCQUILLEN  
YOKAYO POMO, YUKI,  
NOMLAKISECRETARY  
ISAAC BOJORQUEZ  
OHLONE-COSTANOANPARLIAMENTARIAN  
WAYNE NELSON  
LUISEÑOCOMMISSIONER  
SARA DUTSCHKE  
MIWOKCOMMISSIONER  
STANLEY RODRIGUEZ  
KUMEYAAYCOMMISSIONER  
BENNAE CALAC  
PAUMA-YUIMA BAND OF  
LUISEÑO INDIANSCOMMISSIONER  
VACANTCOMMISSIONER  
VACANTACTING EXECUTIVE  
SECRETARY  
MICHELLE CARRNAHC HEADQUARTERS  
1550 HARBOR BOULEVARD  
SUITE 100  
WEST SACRAMENTO,  
CALIFORNIA 95691  
(916) 373-3710  
[NAHC@NAHC.CA.GOV](mailto:NAHC@NAHC.CA.GOV)

**Native American Heritage Commission  
Native American Contact List  
Placer County  
9/30/2025**

<b>Tribe Name</b>	<b>Contact Person</b>	<b>Contact Address</b>	<b>Phone #</b>	<b>Email Address</b>
Nevada City Rancheria Nisenan Tribe	Shelly Covert, Tribal Secretary	P.O. Box 2624 Nevada City, CA, 95959	(530) 460-8494	info@chirpca.org
Nevada City Rancheria Nisenan Tribe	Richard Johnson, Chairman	10338 Park Avenue Nevada City, CA, 95959	(530) 265-6563	richard@nevadacityrancheria.org
Nevada City Rancheria Nisenan Tribe	Saxon Thomas, Tribal Council Member	P.O. Box 2624 Nevada City, CA, 95959	(530) 210-3590	saxon@chirpca.org
TSI-AKIM Maidu of the Taylorsville Rancheria	James Moon Jr, Tribal Member	342 American Hill Road Nevada City, CA, 95959	(530) 913-7257	wemoons@yahoo.com
TSI-AKIM Maidu of the Taylorsville Rancheria	Ben Cunningham-Summerfield, Cultural Advisor	4933 Ponderosa Way Medpines, CA, 95345	(209) 966-8062	brftcrtn@sti.net
TSI-AKIM Maidu of the Taylorsville Rancheria	Richard Cunningham, Vice Chairman	P.O. Box B-111 Greenville, CA, 95947	(530) 250-9584	
TSI-AKIM Maidu of the Taylorsville Rancheria	Donald Ryberg, Chairman	17886 Oak Way Grass Valley, CA, 95945	(530) 955-5998	Siakumne@gmail.com
TSI-AKIM Maidu of the Taylorsville Rancheria	Ben Cunningham, Tribal Council Member	P.O. Box 577 Greenville, CA, 95947	(530) 249-7692	
United Auburn Indian Community of the Auburn Rancheria	Josef Fore, Tribal Historic Preservation Officer	10720 Indian Hill Road Attn: Tribal Preservation Auburn, CA, 95603	(530) 492-9508	THPO@auburnrancheria.com
Wilton Rancheria	Steven Hutchason, Tribal Historic Preservation Officer	9728 Kent Street Elk Grove, CA, 95624	(916) 683-6000	shutchason@wiltonrancheria-nsn.gov

**Native American Heritage Commission  
Native American Contact List  
Placer County  
9/30/2025**

Wilton Rancheria	Cultural Preservation Department,	9728 Kent Street Elk Grove, CA, 95624	(916) 313-4493	cpd@wiltonrancheria-nsn.gov
Wilton Rancheria	Michelle St. Clair, Executive Director of Cultural Preservation	9728 Kent Street Elk Grove, CA, 95624	(916) 683-6000	mstclair@wiltonrancheria-nsn.gov

This list is current only as of the date of this document. Distribution of this list does not relieve any person of statutory responsibility as defined in Section 7050.5 of the Health and Safety Code, Section 5097.94 of the Public Resources Code and Section 5097.98 of the Public Resources Code.

This list is only applicable for contacting local Native Americans with regard to cultural resources assessment for the proposed Phillip Road Project, Placer County.